



**L3HARRIS**



**NARDA  
Safety  
Test  
Solutions**  
S.r.l. Socio Unico

**Sales & Support:**  
Via Rimini, 22  
20142 - Milano (MI)  
Tel.: +39 02 581881  
Fax: +39 02 58188273

**Manufacturing Plant:**  
Via Benessea, 29/B  
17035 - Cisano sul Neva (SV)  
Tel.: +39 0182 58641  
Fax: +39 0182 586400



<http://www.narda-sts.it>

# User's Manual

# EMI SIGNAL GENERATOR

Including description of:

- **PMM 3010 EMI SIGNAL GENERATOR**  
**9 kHz ÷ 1 GHz**
- **PMM 3030 EMI SIGNAL GENERATOR**  
**9 kHz ÷ 3 GHz**

#### **EQUIPMENT SERIAL NUMBER**

You can find the Serial Number on the rear panel of the instrument.

Serial Number is in the form: 0000X00000.

The first four digits and the letter are the Serial Number prefix, the last five digits are the Serial Number suffix. The prefix is the same for identical instruments, it changes only when a configuration change is made to the instrument.

The suffix is different for each instrument.

**Document 3010-3030EN-10416-1.18 – Copyright © NARDA 2021**

**NOTE:**

© Names and Logo are registered trademarks of Narda Safety Test Solutions GmbH and L3 Communications Holdings, Inc. – Trade names are trademarks of the owners.



If the instrument is used in any other way than as described in this User’s Manual, it may become unsafe.

Before using this product, the related documentation must be read with great care and fully understood to familiarize with all the safety prescriptions.

To ensure the correct use and the maximum safety level, the User shall know all the instructions and recommendations contained in this document.




This product is a **Safety Class I** instrument according to IEC classification and has been designed to meet the requirements of EN61010-1 (Safety Requirements for Electrical Equipment for Measurement, Control and Laboratory Use).

In accordance with the IEC classification, the power supply of this product meets requirements **Safety Class II** and **Installation Category II** (having double insulation and able to carry out mono-phase power supply operations).

It complies with the requirements of **Pollution Class II** (usually only non-conductive pollution). However, occasionally it may become temporarily conductive due to condense on it.

The information contained in this document is subject to change without notice.

**EXPLANATION OF ELECTRICAL AND SAFETY SYMBOLS :**

 You now own a high-quality instrument that will give you many years of reliable service. Nevertheless, even this product will eventually become obsolete. When that time comes, please remember that electronic equipment must be disposed of in accordance with local regulations. This product conforms to the WEEE Directive of the European Union (2002/96/EC) and belongs to Category 9 (Monitoring and Control Instruments). You can return the instrument to us free of charge for proper environment friendly disposal. You can obtain further information from your local Narda Sales Partner or by visiting our website at [www.narda-sts.it](http://www.narda-sts.it).



Warning, danger of electric shock



Earth



Read carefully the Operating Manual and its instructions, pay attention to the safety symbols.



Unit Earth Connection



Earth Protection



Equipotential

**EXPLANATION OF SYMBOLS USED IN THIS DOCUMENT :**



The **DANGER** sign draws attention to a serious risk to a person’s safety, which, if not avoided, will result in death or serious injury. All the precautions must be fully understood and applied before proceeding.



The **WARNING** sign indicates a hazardous situation, which, if not avoided, could result in death or serious injury. All the precautions must be fully understood and applied before proceeding.



The **CAUTION** sign indicates a hazardous situation, which, if not avoided, could result in minor or moderate injury.



The **NOTICE** sign draws attention to a potential risk of damage to the apparatus or loss of data.



The **NOTE** sign draws attention to important information.

# Contents

	<b>Page</b>
<b>Safety recommendations and instructions.....</b>	VI
<b>EC Declaration of Conformity .....</b>	VII
<b>1. General Information</b>	
1.1 Documentation.....	1-1
1.2 Operating Manual changes.....	1-2
1.3 Introduction to PMM 3010-3030.....	1-2
1.4 Instrument Items.....	1-3
1.5 Optional accessories.....	1-3
1.6 Other accessories.....	1-3
1.7 PMM 3010 Main Specifications.....	1-4
1.8 PMM 3030 Main Specifications.....	1-5
1.9 PMM 3010 Front Panel.....	1-6
1.10 PMM 3010 Rear Panel.....	1-7
1.11 PMM 3030 Front Panel.....	1-8
1.12 PMM 3030 Rear Panel.....	1-9
1.13 Functional Description.....	1-10
<b>2 Installation</b>	
2.1 Introduction.....	2-1
2.2 Initial Inspection.....	2-1
2.3 Packing and Unpacking.....	2-1
2.4 Preparation for Use.....	2-1
2.5 Battery Charger.....	2-1
2.5.1 To replace the mains connector of the battery charger.....	2-1
2.5.2 To charge the internal battery.....	2-2
2.5.3 Indication of the battery status on the screen and with PW Led..	2-2
2.6 Environment.....	2-2
2.7 Return for Service.....	2-3
2.8 Equipment Cleaning.....	2-3
2.9 Equipment ventilation.....	2-3
2.10 Hardware Installation.....	2-4
2.11 The user port.....	2-5
2.11.1 INTERLOCK.....	2-6
<b>3 Setup and Panel Instructions</b>	
3.1 Introduction.....	3-1
3.2 Display.....	3-3
3.3 Unit.....	3-4
3.4 Misc.....	3-4
3.5 Panel.....	3-5
<b>4 Operating instructions</b>	
4.1 Introduction.....	4-1
4.2 Frequency.....	4-2
4.3 Level.....	4-5
4.4 Modulation.....	4-8

	<b>Page</b>
<b>5 PMM WIN3030 Software</b>	
5.1 Introduction.....	5-1
5.2 System requirements .....	5-1
5.3 Preparing the hardware .....	5-1
5.4 Software installation .....	5-1
5.5 Running the Utility .....	5-5
5.6 Connection Port .....	5-5
5.7 Settings .....	5-5
5.8 Sweeps .....	5-6
5.9 Operation .....	5-7
5.9.1 Cursor .....	5-7
5.9.2 Knob .....	5-7
5.9.3 Frequency and Level .....	5-7
5.9.4 Modulations .....	5-8
5.9.5 MOD ON-OFF .....	5-8
5.9.6 RF ON-OFF .....	5-8
5.10 Uninstall .....	5-9
<b>6 Remote control</b>	
6.1 Introduction.....	6-1
6.2 Communication.....	6-1
6.3 Protocol.....	6-1
6.4 Format.....	6-1
6.5 PMM 3010-3030 commands.....	6-2
6.5.1 Query Commands.....	6-2
6.5.2 Setting commands.....	6-4
6.6 PMM Immunity Suite Software.....	6-6
<b>7 Updating firmware</b>	
7.1 Introduction.....	7-1
7.2 System requirements.....	7-1
7.3 Preparing the Hardware.....	7-1
7.4 Software Installation.....	7-1
7.5 To transfer data.....	7-3
<b>8 PMM 9010-RMA Rack Mount Adapter for Rack 19”</b>	<b>Page</b>
8.1 Introduction.....	8-1
8.2 Instruments Items.....	8-1
8.3 Optional accessories.....	8-1
8.4 PMM 9010-RMA Main Specifications.....	8-2
8.5 PMM 9010-RMA Front view.....	8-2
8.6 PMM 9010-RMA Inside view.....	8-3
8.7 Rack requirements.....	8-4
8.8 Required equipment.....	8-4
8.9 Moving chassis.....	8-4
8.10 Installation guidelines .....	8-5
8.11 Installing the PMM 9010-RMA.....	8-6
8.12 Use of the PMM 9010-RMA with PMM 3010.....	8-7

## Figures

Figure	Page
1-1 PMM 3010 Front Panel.....	1-6
1-2 PMM 3010 Rear Panel.....	1-7
1-3 PMM 3030 Front Panel.....	1-8
1-4 PMM 3030 Rear Panel.....	1-9
1-5 BP-02 Replaceable battery.....	1-10
1-6 PMM 3010-3030 Functional Block Diagram.....	1-10
2-1 Operating screen.....	2-4
2-2 Example of INTERLOCK circuits .....	2-6
3-1 Auto-Test result.....	3-1
3-2 Main Operating screen.....	3-1
3-3 Display setting.....	3-3
4-1 Start-Up screen.....	4-1
6-1 Radiated immunity.....	6-6
6-2 Conducted immunity.....	6-6
6-3 Automotive immunity (bulk current and stripline tests).....	6-6
8-1 Front view 9010-RMA.....	8-2
8-2 Inside view 9010-RMA.....	8-3
8-3 PMM 9010-RMA with 3030/3010 Instrument.....	8-7

## Tables

Table	Page
1-1 3010 Main Specifications .....	1-4
1-2 3030 Main Specifications .....	1-5
8-1 PMM 9010-RMA Main Specifications .....	8-2

**⚠ WARNING** ***SAFETY RECOMMENDATIONS AND INSTRUCTIONS***

This product has been designed, produced and tested in Italy, and it left the factory in conditions fully complying with the current safety standards. To maintain it in safe conditions and ensure correct use, these general instructions must be fully understood and applied before the product is used.

- When the device must be connected permanently, first provide effective grounding;
- If the device must be connected to other equipment or accessories, make sure they are all safely grounded;
- In case of devices permanently connected to the power supply, and lacking any fuses or other devices of mains protection, the power line must be equipped with adequate protection commensurate to the consumption of all the devices connected to it;
- In case of connection of the device to the power mains, make sure before connection that the voltage selected on the voltage switch and the fuses are adequate for the voltage of the actual mains;
- Devices in Safety Class I, equipped with connection to the power mains by means of cord and plug, can only be plugged into a socket equipped with a ground wire;
- Any interruption or loosening of the ground wire or of a connecting power cable, inside or outside the device, will cause a potential risk for the safety of the personnel;
- Ground connections must not be interrupted intentionally;
- To prevent the possible danger of electrocution, do not remove any covers, panels or guards installed on the device, and refer only to NARDA Service Centers if maintenance should be necessary;
- To maintain adequate protection from fire hazards, replace fuses only with others of the same type and rating;
- Follow the safety regulations and any additional instructions in this manual to prevent accidents and damages.

# Dichiarazione di Conformità *EC Declaration of Conformity*

In accordo alla Decisione 768/2008/EC, conforme alle direttive EMC 2014/30/UE, Bassa Tensione 2014/35/UE e RoHS 2011/65/UE, ed anche alle norme ISO/IEC 17050-1 e 17050-2.

*In accordance with the Decision 768/2008/EC, compliant to the Directives EMC 2014/30/UE, Low Voltage 2014/35/UE and RoHS 2011/65/EU, also compliant to the ISO/IEC standard 17050-1 and 17050-2*

Il costruttore  
*The manufacturer* **narda Safety Test Solutions S.r.l. Socio Unico**

Indirizzo  
*Address* **Via Benessea, 29 / B**

**I-17035 Cisano sul Neva (SV) - Italy**

sulla base delle seguenti norme europee armonizzate, applicate con esito positivo:  
*based on the following harmonized European Standards, successfully applied:*

EMC - Emissioni:  
*EMC - Emission:* **EN 61326-1 (2013)**

EMC - Immunità:  
*EMC - Immunity:* **EN 61326-1 (2013)**

Sicurezza:  
*Safety:* **CEI EN 61010-1 (2010)**

dichiara, sotto la propria responsabilità, che il prodotto:  
*declares, under its sole responsibility, that the product:*

Descrizione  
*Description* **EMI SIGNAL GENERATOR**

Modello  
*Model* **PMM 3010**

è conforme ai requisiti essenziali delle seguenti Direttive:  
*conforms with the essential requirements of the following Directives:*

Bassa Tensione  
*Low Voltage* **2014/35/EU**

Compatibilità Elettromagnetica  
*EMC* **2014/30/EU**

RoHS  
*RoHS* **2011/65/EU**

Cisano sul Neva, 03 May 2017

Egon Stocca  
General Manager



# Dichiarazione di Conformità EC Declaration of Conformity

In accordo alla Decisione 768/2008/EC, conforme alle direttive EMC 2014/30/UE, Bassa Tensione 2014/35/UE e RoHS 2011/65/UE, ed anche alle norme ISO/IEC 17050-1 e 17050-2.  
In accordance with the Decision 768/2008/EC, compliant to the Directives EMC 2014/30/UE, Low Voltage 2014/35/UE and RoHS 2011/65/EU, also compliant to the ISO/IEC standard 17050-1 and 17050-2

Il costruttore  
*The manufacturer* **narda Safety Test Solutions S.r.l. Socio Unico**

Indirizzo  
*Address* **Via Benessea, 29 / B**

**I-17035 Cisano sul Neva (SV) - Italy**

sulla base delle seguenti norme europee armonizzate, applicate con esito positivo:  
*based on the following harmonized European Standards, successfully applied:*

EMC - Emissioni:  
*EMC - Emission:* **EN 61326-1 (2013)**

EMC - Immunità:  
*EMC - Immunity:* **EN 61326-1 (2013)**

Sicurezza:  
*Safety:* **CEI EN 61010-1 (2010)**

dichiara, sotto la propria responsabilità, che il prodotto:  
*declares, under its sole responsibility, that the product:*

Descrizione  
*Description* **EMI SIGNAL GENERATOR**

Modello  
*Model* **PMM 3030**

è conforme ai requisiti essenziali delle seguenti Direttive:  
*conforms with the essential requirements of the following Directives:*

Bassa Tensione  
*Low Voltage* **2014/35/EU**

Compatibilità Elettromagnetica  
*EMC* **2014/30/EU**

RoHS  
*RoHS* **2011/65/EU**

Cisano sul Neva, 03 May 2017

Egon Stocca  
General Manager





# 1 – General Information



## 1.1 Documentation

Enclosed with this manual are:

- a service questionnaire to send back to NARDA in case an equipment servicing is needed
- an accessories checklist to verify all accessories enclosed in the packaging.

## **1.2 Operating Manual Changes**

Instruments manufactured after the printing of this manual may have a serial number prefix not listed on the title page; this indicates that instruments with different Serial Number prefix may be different from those documented in this manual.

## **1.3 Introduction to PMM 3010-3030**

PMM 3010-3030 is a powerful wide band signal generator, covering the frequency range from 9 kHz to 1000 MHz (for PMM 3010) and from 9 kHz to 3000 MHz (for PMM 3030).

The generator is fully automatic and programmable via a RS232 serial port or an USB. Due to his performances it is an ideal tool for all EMC immunity test applications.

The instrument has several features not even included into high cost generator such as: internal pulse modulation, sweeping and correction table downloading (not implemented yet).

The PMM 3010-3030 has been designed adopting an innovative philosophy made possible only in the recent years by the availability of superior technology components. Most parts of this instrument are fully digital but not of course the output RF module. It therefore combines into a versatile signal Generator the precision and accuracy of a numeric approach, with flexibility and user friendly approach typical of a modern instrument.

#### 1.4 Instrument Items

PMM 3010-3030 includes the following items:

- PMM Signal Generator
- BP-02 Li-ion battery pack (available only for the version 3030-02);
- AC/DC Converter with plug adapters;
- Flexible black cover/accessories holding;
- N-BNC coaxial adapter;
- RS232 cable, 2m;
- USB-RS232 serial converter;
- USB cable, 2m;
- Operating manual;
- PMM 3010-3030 Utility Software on Software Media;
- Certificate of Compliance;
- Return for Repair Form.

#### 1.5 Optional accessories

PMM 3010-3030 can be used with several optional accessories, the most common being the following:

- PMM PA6002 Wideband RF Power Amplifier 10W(15W) 9kHz - 230MHz;
- PMM 6630 RF Power meter for EMC application;
- PMM 6630D Slave power meter;
- Various Amplifiers, depending on the application, 10 kHz - 3 GHz;
- F-203I-23 Injection Clamp;
- F-203I-23-DCN Decoupling Network;
- F-120-9A Injection Probe;
- F-33-1 Current Monitor;
- Wide range of CDNs;
- 150-50 Calibration kit for CDNs;
- Load-50 50 Ohm load;
- 6 dB, 50 Ohm fixed attenuators, 10, 15, 30, 100 W;
- Coupling/Decoupling Networks;
- EM current injection clamp
- RF power meters;
- Wide range of Antennas;
- GPIB to RS232 Adapter.
- PMM 9010-RMA Rack Mount Adapter for Rack 19"

#### 1.6 Other accessories

Of course, the PMM 3010-3030 can be used with other accessories available on the market, like:

- Injection Probes and CDNs, any type;
- Radiating Antennas;
- Various TEM/GTEM Cells.

**1.7 Main Specifications** Table 1-1 lists the PMM 3010 performance specifications.  
 The following conditions apply to all specifications:

- The ambient temperature shall be 10°C to 40°C

**TABLE 1-1 Main Specifications**

Electrical Characteristics	Performance Limits
<b>Frequency</b>	
Range	9 kHz to 1 GHz
Resolution	1 kHz
Accuracy	± 10 ppm (f > 10 MHz)
<b>Level</b>	
Range	- 107 to + 10 dBm
Resolution	0.1 dB
Accuracy	± 1 dB dB (Level > -30dBm)
Output impedance	50 Ω
Connector	N (female)
<b>Spectral purity</b>	
Harmonic	< - 30 dBc @ 0 dBm f > 1 MHz
<b>AM modulation</b>	
Internal	2 Hz, 50Hz, 400Hz, 1 kHz - from 10% to 90%
External	2 Hz to 10 kHz - from 10% to 90%
Input impedance	600 Ω
Connector	BNC female
<b>Pulse modulation</b>	
Internal	1 Hz, 100 Hz, 200 Hz, 1 kHz (duty cycle 1/2)
ON/OFF ratio > 40 dB @ 0 dBm	100 Hz (duty cycle 1/24), 200 Hz, 217 Hz (duty cycle 1/8)
<b>Remote control</b>	RS-232, USB 2.0 (rear), USB 2.0 (front: only for future implementation), High Speed Optical Link (2 channels: only for future implementation); User Port; IEEE-488 (GPIB) external option
<b>System interface</b>	
<b>Connectors</b>	DB9, USB-B, USB-A, Optic Fiber, DB-15, IEEE-488
<b>User Port</b>	RF Off, RF On
<b>Display</b>	
<b>Graphical resolution</b>	320 x 240 pixel; 16 gray levels
<b>Units</b>	dBm, dBμV
<b>Operating temperature</b>	10°C to 40°C
<b>Power supply</b>	10 - 15 Volt DC, 2.5A; Standard AC-DC adapters
<b>Dimensions</b>	235 x 105 x 335 mm (WxHxD)
<b>Weight</b>	3.5kg

## 1.8 Main Specifications

Table 1-1 lists the PMM 3030 performance specifications.

The following conditions apply to all specifications:

- The ambient temperature shall be 10°C to 40°C

**TABLE 1-2 Main Specifications**

Electrical Characteristics	Performance Limits
<b>Frequency</b>	
Range	9 kHz to 3 GHz (*)
Resolution	1 kHz
Accuracy	± 10 ppm (f > 10 MHz)
<b>Level</b>	
Range	- 107 to + 10 dBm
Resolution	0.1 dB
Accuracy	± 1 dB dB (Level > -30dBm)
Output impedance	50 Ω
Connector	N (female)
<b>Spectral purity</b>	
Harmonic	< - 30 dBc @ 0 dBm f > 1 MHz
<b>AM modulation</b>	
Internal	2 Hz, 50Hz, 400Hz, 1 kHz - from 10% to 90%
External	2 Hz to 10 kHz - from 10% to 90%
Input impedance	600 Ω
Connector	BNC female
<b>Pulse modulation</b>	
Internal	1 Hz, 100 Hz, 200 Hz, 1 kHz (duty cycle 1/2)
ON/OFF ratio > 40 dB @ 0 dBm	100 Hz (duty cycle 1/24), 200 Hz, 217 Hz (duty cycle 1/8)
<b>Remote control</b>	RS-232, USB 2.0 (rear), USB 2.0 (front: only for future implementation), High Speed Optical Link (2 channels: only for future implementation); User Port; IEEE-488 (GPIB) external option
<b>System interface</b>	
	DB9, USB-B, USB-A, Optic Fiber, DB-15, IEEE-488
<b>Connectors</b>	
	RF Off, RF On
<b>User Port</b>	
<b>Display</b>	
<b>Graphical resolution</b>	320 x 240 pixel; 16 gray levels
<b>Units</b>	dBm, dBμV
<b>Operating temperature</b>	10°C to 40°C
<b>Power supply</b>	10 - 15 Volt DC, 2,5A; Li-Ion interchangeable battery (3 h operations, average) (available only for the version 3030-02) Standard AC-DC adapters
<b>Dimensions</b>	235 x 105 x 335 mm (WxHxD)
<b>Weight</b>	
Version 3030-01 (without battery )	3.5kg
Version 3030-02 (with battery 7.4V 7.8Ah Li-ion )	4.3Kg

(\*) Firmware release 1.06 or higher

### 1.9 PMM 3010 Front Panel



Fig. 1-1 PMM 3010 Front Panel

Legend from left to right:

- **USB**            USB 2.0 connection port (future implementation only)
- **PW**             Power led  
Indicates the power status
- **DISPLAY**       Main display  
To graphically show the instrument status
- **User keys**      5 command keys  
To select the various available functions
- **Controls**       Rotary Knob, Left and Right (decrease / increase) Arrow Keys; Esc; Enter/Switch Key  
The Rotary Knob and the Arrows Keys can be used to increase and decrease the setting values; the Esc key allows to return to the previous status/display; the Enter/switch key is used to confirm a set value and to switch On and Off the instrument.
- **RF Output**     Main generator RF output connector

### 1.10 PMM 3010 Rear Panel



**Fig. 1-2** PMM 3010 Rear Panel

Legend from left to right:

- **RS232**                    9 pin, DB9 connector
- **USER PORT**            User I/O Port
- **USB**                     Fully functional USB 2.0 Port
- **LINK1/LINK2**        Optical link connectors for PMM equipments (for future implementation)
- **Power Supply**        Power Supply Inputs for use to power the apparatus (PS1)
- **MOD**                    External modulation input
- **REF**                     External Reference input/output
- **Fan**                     Cooling Fan controlled by firmware
- **Earth ground connector**
- **Product Label and Serial Number**



### 1.11 PMM 3030 Front Panel



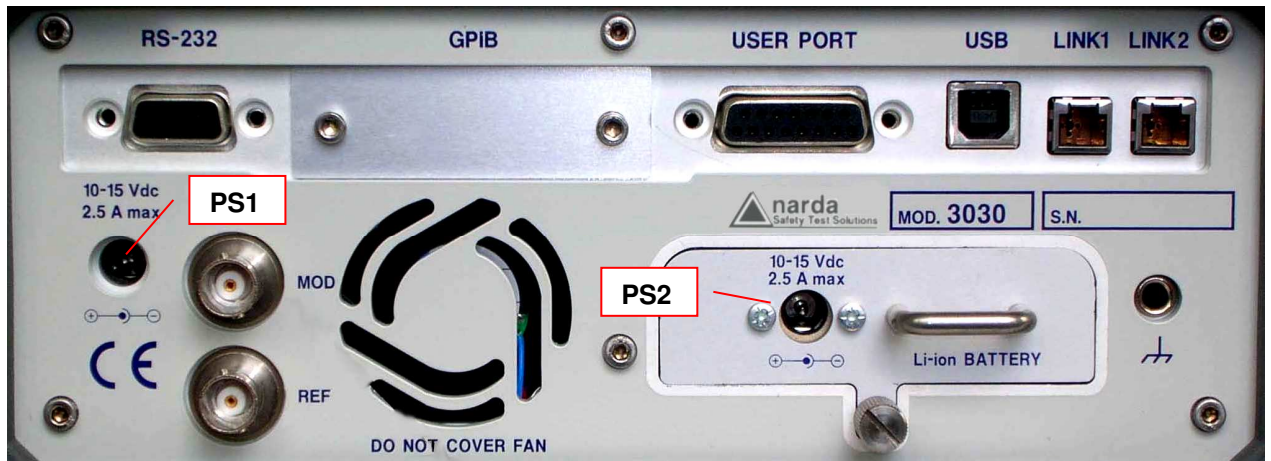
Fig. 1-3 PMM 3030 Front Panel

Legend from left to right:

- **USB**            USB 2.0 connection port (future implementation only)
- **PW**             Power led  
Indicates the power status
- **DISPLAY**       Main display  
To graphically show the instrument status
- **User keys**      5 command keys  
To select the various available functions
- **Controls**       Rotary Knob, Left and Right (decrease / increase) Arrow Keys; Esc; Enter/Switch Key  
The Rotary Knob and the Arrows Keys can be used to increase and decrease the setting values; the Esc key allows to return to the previous status/display; the Enter/switch key is used to confirm a set value and to switch On and Off the instrument.
- **RF Output**     Main generator RF output connector



## 1.12 PMM 3030 Rear Panel



**Fig. 1-4 PMM 3030 Rear Panel**

Legend from left to right:

- **RS232**                      9 pin, DB9 connector
- **GPIB**                        IEEE488 I/O Port (External Option)
- **USER PORT**                User I/O Port
- **USB**                         Fully functional USB 2.0 Port
- **LINK1/LINK2**              Optical link connectors for PMM equipments (for future implementation)
- **Power Supply**              Power Supply Inputs for use to power the apparatus and simultaneously charge its battery (PS1) and to simply charge the battery when it's out of the Generator (PS2) ( Version 3030-02 ).
- **MOD**                         External modulation input
- **REF**                         External Reference input/output
- **Fan**                         Cooling Fan controlled by firmware
- **Replaceable Li-Ion Battery (Fig. 1-4) ( available only for the version 3030-02 ) with main Battery Charger connector**
- **Earth ground connector**
- **Product Label and Serial Number**



Fig. 1-5 BP-02 Replaceable Battery

1.13 Functional Description

The PMM 3010-3030 features a completely new Generator architecture based on the most recent DSP technology, as shown in the diagram below.

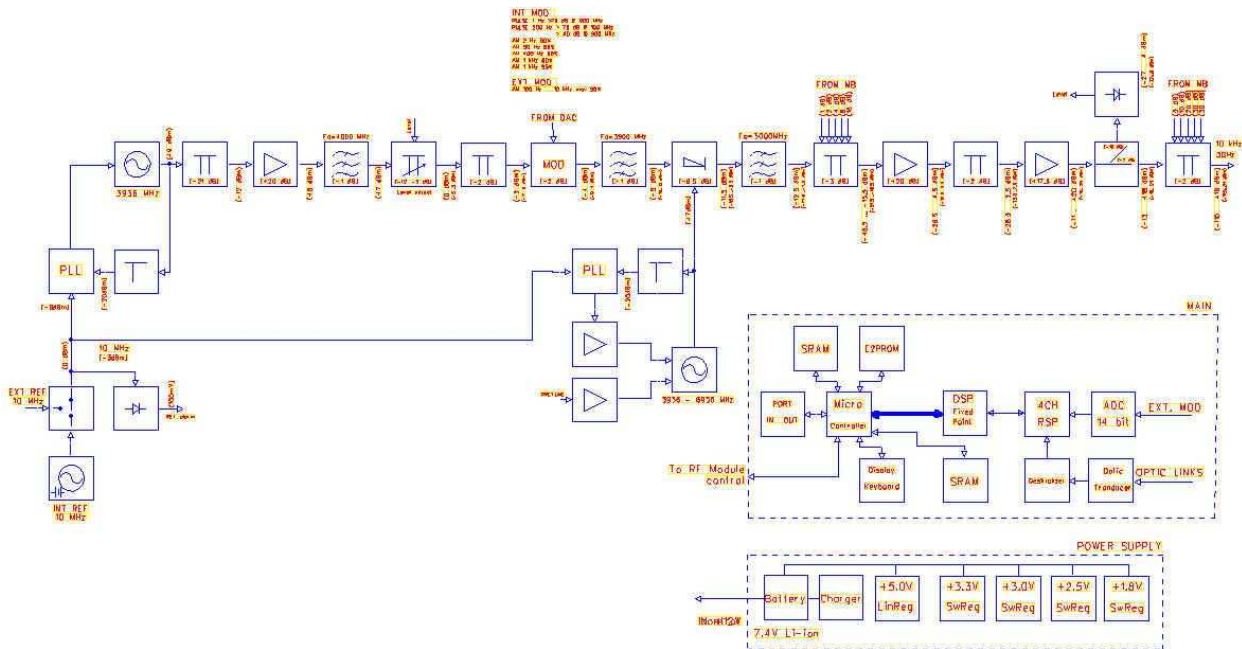


Fig. 1-6 PMM 3010-3030 Functional BLOCK Diagram

## 2 - Installation

### 2.1 Introduction

This section provides the information needed to install your PMM 3010-3030.

It includes the information pertinent to initial inspection and power requirements, connections, operating environment, instrument mounting, cleaning, storage and shipment.

### 2.2 Initial Inspection

When receiving the equipment, first inspect the shipping box for any damage.

If the shipping box is damaged, it should be kept until the contents of the shipment have been checked for completeness and the instrument has been checked mechanically and electrically.

### 2.3 Packing and Unpacking

Verify the availability of all the shipped items with reference to the shipping check list enclosed with the Operating Manual.

Notify any damage to the forwarder personnel as well as to your NARDA Representative.



**To avoid further damage, do not turn on the instrument when there are signs of shipping damage to any portion of it.**

### 2.4 Preparation for Use



**This is a Safety Class I apparatus, but it is also equipped with a protective/functional earth terminal on the rear panel. A good safety/functional ground connection should be provided before to operate the Generator.**



**The PMM 3010 is available with only external power supply.**

**The PMM 3030 is available in two different version:**

- **3030-01 with only external power supply.**
- **3030-02 with external power supply and the Li-ion BP-02 Battery Pack (7.4V Li-Ion 7.8Ah).**

### 2.5 PMM 3030-02 Battery charger

The battery charger supplied with the PMM 3030-02 can work at either 50 Hz or 60 Hz with a supply voltage rated between 100 and 240 Volt.

It is supplied, when needed, with different connectors to fit all the possible outlets in accordance with the various National standards.



Battery charger: DC, 10 - 15 V, ~ 2500 mA  
=> DC Connector

#### 2.5.1 To replace the mains connector of the battery charger

To replace the mains connector, simply remove the one installed on the battery charger sliding it off, and insert the one that fits the outlets in use.

**2.5.2 To charge the internal battery**

In order to guarantee the best autonomy of the internal battery, we recommend to fully recharge it before using the PMM 3030-02. To charge the battery, simply connect the battery charger to the mains power socket and insert the DC output connector of the battery charger to the input **CHARGER** on the rear panel of the Generator. The average charging time is 6 hours when starting with a completely discharged battery.

**2.5.3 Indication of the battery status on the screen and with PW led**

The charge status of the battery is displayed on the top right-hand corner of the screen in most of the Generator modes. The symbol of a small battery will be filled up proportionally to the status of the battery charge.



When the battery is not under charge, the actual voltage value is displayed under the symbol and the length of the black bar filling the symbol indicates the available autonomy still remaining.



When the battery charger is connected to the PMM 3030-02 the indication "PWR" appears just below to the battery icon and the front panel **PW** led becomes yellow if the Generator is switched on and red if the Generator is off.

The battery charging is suspended or ends automatically when one of the following events occurs:

- the full capacity of the battery has been achieved,
- the internal temperature of the battery is higher then a preset safety threshold,
- the charging time limit has been exceeded.

Both during recharging and when charge is completed PMM 3030-02 is ready for use.



**The PW led on the front panel blinks green when the battery voltage drops below 7,0V to warn the Operator that the instrument is running out of battery.**

**To prevent any damage to the battery, the PMM 3030-02 automatically switches itself off when the battery voltage falls below 6,5V.**



**In order to keep the batteries fully functional, it is crucial to have a complete charge-discharge cycle before storing them for periods longer than 4 months. Therefore, it is suggested to recharge the batteries at least every 4 months even when the PMM 3030-02 has not been used.**

**2.6 Environment**

The operating environment of the Generator is specified to be within the following limits:

- Temperature +10° to +40° C
- Humidity < 90% relative
- Altitude 4000 meters

The instrument should be stored and shipped in a clean, dry environment which is specified to be within the following limitations:

- Temperature -40° to + 50° C
- Humidity < 95% relative
- Altitude 15.000 meters



### 2.7 Return for Service

If the instrument should be returned to NARDA for servicing, please complete the questionnaire enclosed with the Operating Manual and attach it to the instrument.

To minimize the repair time, be as specific as possible when describing the failure. If the failure only occurs under certain conditions, explain how to duplicate the failure.

If possible, reusing of the original packaging to ship the equipment is preferable.

In case other package should be used, ensure to wrap the instrument in heavy paper or plastic.

Use a strong shipping box and use enough shock absorbing material all around the equipment to provide a firm cushion and prevent movement in the shipping box; in particular protect the front panel.

Seal the shipping box securely.

Mark the shipping box FRAGILE to encourage careful handling.



**Nowadays there are restrictions on the shipment of hazardous materials, eg. some types of lithium batteries.**

**Please, check the proper, safe, shipping mode, with the help of your courier, in the case the product is equipped with batteries.**

### 2.8 Equipment Cleaning

Use a clean, dry, non abrasive cloth for external cleaning of the equipment.



**To clean the equipment do not use any solvent, thinner, turpentine, acid, acetone or similar matter to avoid damage to external plastic or display surfaces.**

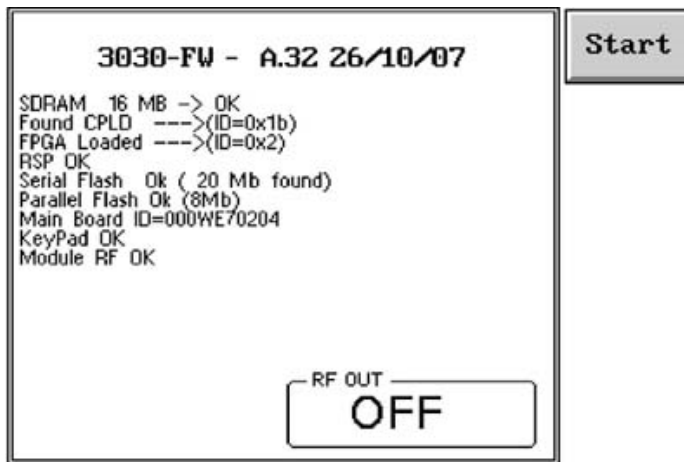
### 2.9 Equipment ventilation



**To allow correct equipment ventilation ensure that the vent grids on the rear panel and on the bottom of the Generator are free by any obstructing object.**

**2.10 Hardware Installation**

PMM 3010-3030 is delivered from factory ready to use. Remove the Generator from cardboard shipping box and keep the “ON” button pressed until the PW Led lights up (about 1 second), then release the button. To avoid unwanted starts, if the “ON” button is kept pressed for a too short time or for more then 2 seconds the instrument is switched automatically off. After having been switched ON, the PMM 3010-3030 boots with its internal BIOS and runs the firmware which manages the Generator. At the beginning the instrument performs a diagnostic test to check if everything is working properly. The boot sequence is very fast and the Generator is ready to use in a couple of seconds after having pressed the ON button. During the switch-on procedure the LCD displays the results of the auto-test and the release – and date - of the loaded firmware: if the display shows “OK” it means that the PMM 3010-3030 is working properly. When the sequence is completed the main screen shows the test results and the main functional keys on the right of the LCD display: the Generator is now ready to operate.



Display at start-up showing auto-test result, diagnostic info and Start button.



To avoid damages to the RF power stage of the generator it is recommendable not to leave the output connector without any 50 Ω load. Also never inject signals into the output connector.

If auto-test is normally passed, PMM 3010-3030 switches automatically to the operation mode, displaying the following screen.

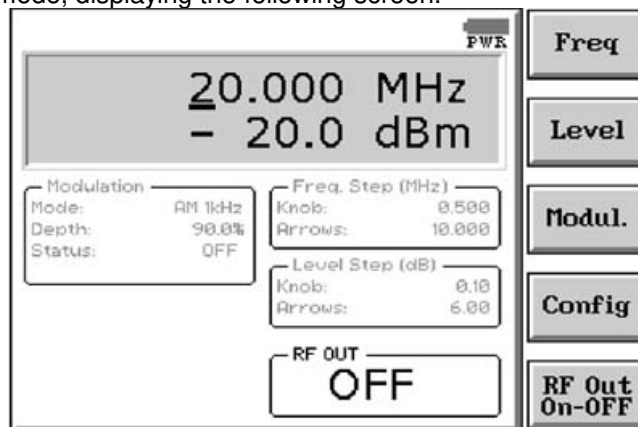


Fig. 2-1 Operating Screen



## 2.11 The User Port

The PMM 3010-3030 features on the rear panel a programmable User Port that can be used to drive (or to be driven by) external devices or, more generally, to input/output signals and data.

The User Port can easily be programmed and managed; the connector has the following hardware connection:

PIN #	Signal
1	IN3 (INTERLOCK)
2	IN1
3	+ 12 VDC (max 50 mA)
4	OUT 0
5	OUT 2
6	OUT 4
7	USR-MISO
8 and 9	IN 2
10	IN 0
11	GND
12	OUT 1
13	OUT 3
14	USR-MOSI
15	USR-CLK

Data output (OUT 0 to OUT 4) and input (IN 0 to IN 3) are opto-coupled TTL level with max. 1 mA draining.

It is even possible to directly connect an Input to an Output port and control the state of the Output via the PC (please refer to the chapter 6 “Remote Control” for further information about how to do that).

If, for example, the OUT 3 and the IN 3 are connected together, when the OUT 3 is set to high level, also the IN 3 goes high and when it happens the INTERLOCK protection activates.

This is an easy way to control the Interlock function via software.

**2.11.1 INTERLOCK**

An Interlock function, which is able to switch the RF OUT Off, is provided for protection.

The User Port pin 1, IN3, is used for this purpose.

When the IN3 state is low level (TTL), which means for example it is left disconnected or connected to GND, the Interlock function is disabled and the RF Out can be switched On or Off as needed.

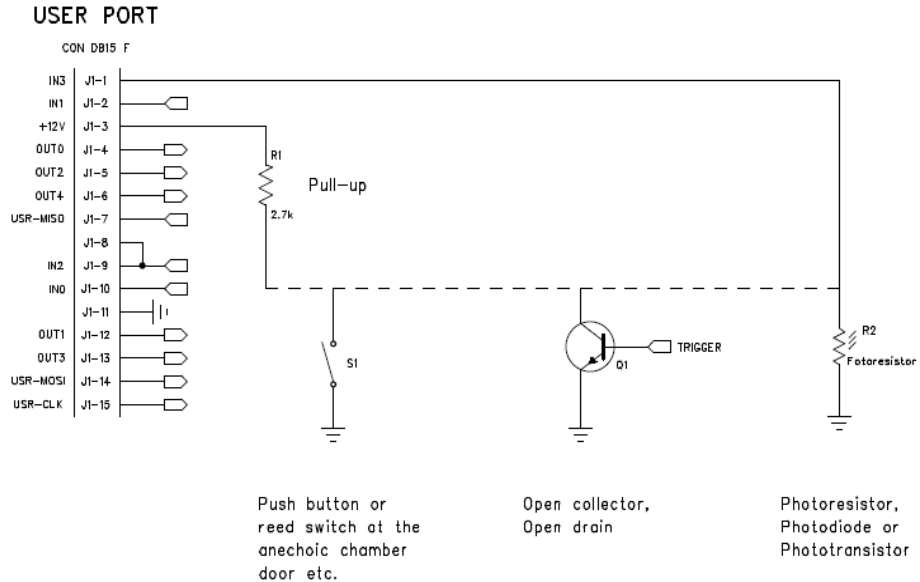
When the IN3 input pin is, instead, at high TTL level, the Interlock is activated and the RF Out is turned automatically Off.



This is the indication when the Interlock is active.

An example of usage is to equip the door of the cell or room in use, of an interlock switch, and connect it in series with a 2.7kΩ resistor from the User Port pin 3 to the User Port pin 1. In this way, when the switch is open the Interlock is disabled while when closed, the Interlock is activated.

Another circuit configuration could be to pull-up the IN3 so that the Interlock is active and then inhibit it by closing to ground a switch or via an open collector transistor or a photoresistor or photodiode/phototransistor.



**Fig. 2-2** Example of INTERLOCK circuits



## 3 – Set-Up and Panel Instructions

### 3.1 Introduction

PMM 3010-3030 has been designed with an user friendly interface to be easily used by EMC engineer as well by not-skilled personnel. All the functions can be recalled by the front panel keyboard and rotary knob.

The internal firmware Start-Up process performs an Auto-Test immediately after having switched ON the equipment and all resulting data are reported on the LCD display, as showed in the following screenshot:

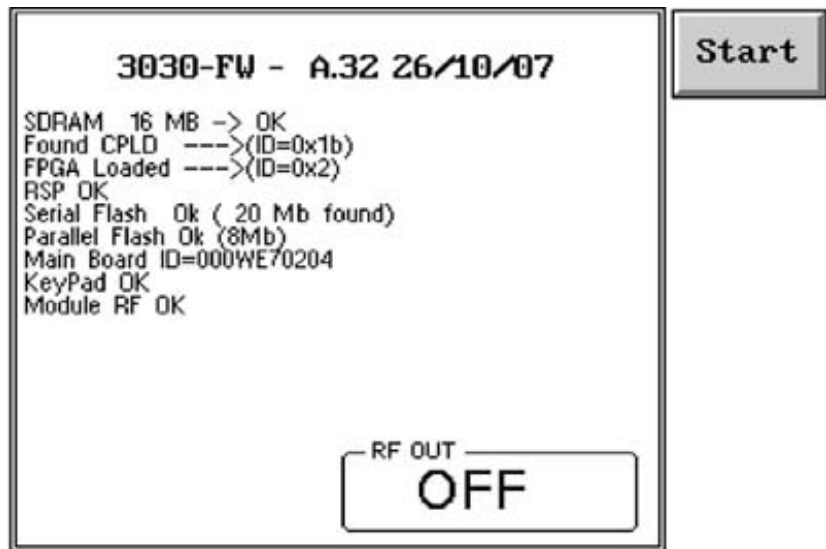


Fig. 3-1 Auto-Test Result

If the Auto-Test is successfully completed the PMM 3010-3030 automatically switches to the Main Operating Screen

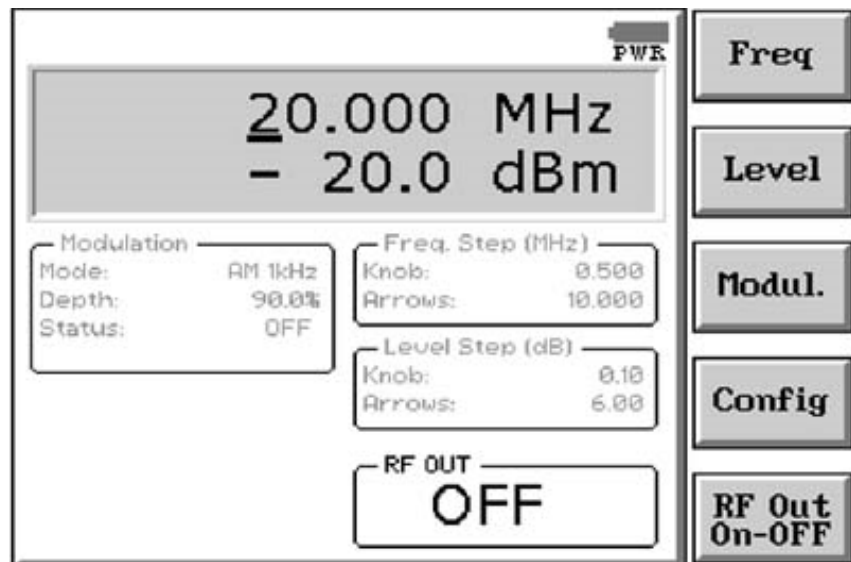


Fig. 3-2 Main Operating Screen



Press this function key in the main menu to enter in the **Configuration** window, which allows the Operator to set the global parameters of the receiver: display options, etc.



The **Config** function is divided into four sub-windows:

- **Display**
- **Unit**
- **Misc**
- **Panel**



Always use Esc button to return to the previous view/condition.  
(for a more comfortable use, only in this case the Main Operating Menu is recalled when pushing Esc button from these sub-windows)



### 3.2 Display



The **Display** setup has five function keys:

- **3 Dim Aspect**: to choose between standard and 3-dimensional keys
- **Inverse**: to reverse the text and background colors;
- **Style**: to switch between font style 0 and font style 1;
- **Key border**: to choose the style of the key borderlines between three different possibilities;
- **Contrast / Back Light** (toggle switch): to adjust the backlight and contrast settings by the rotary knob.

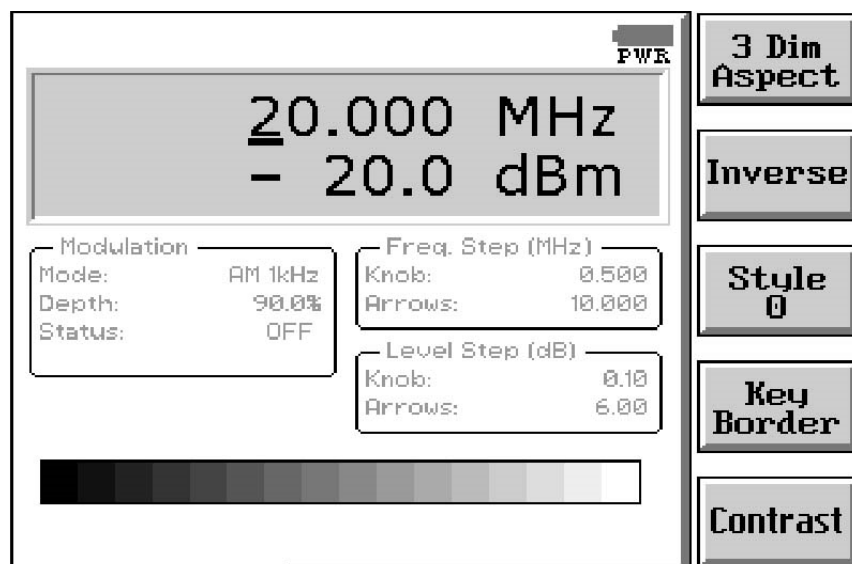


Fig. 3-3 Display setting

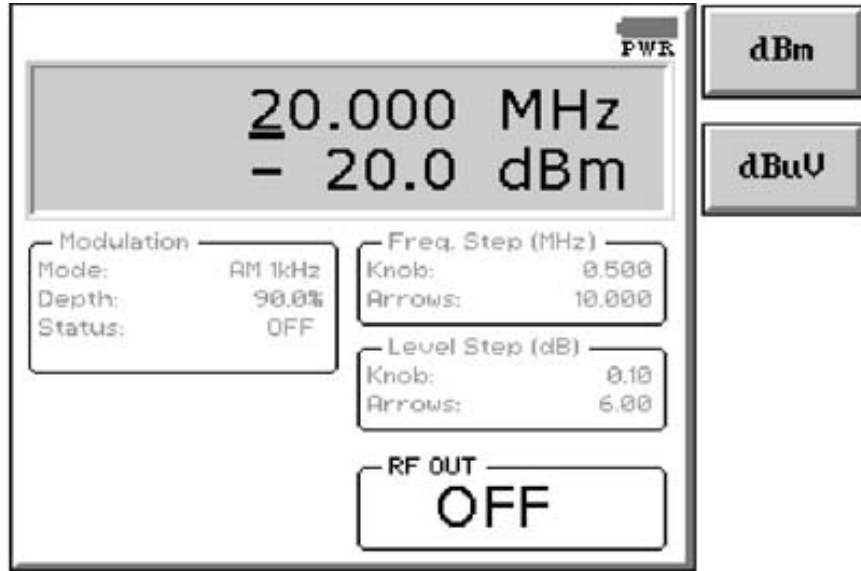
**3.3 Unit**



Entering in the **Unit** menu it is possible to change the indicated unit used to display the measured levels. The available units are **dBμV** and **dBm**. In a 50 Ohm system the relationship between dBm and dBμV is:

$$\text{dB}\mu\text{V} = \text{dBm} + 107$$

i.e., 0 dBm (1 mW) = 107 dBμV



**3.4 Misc**

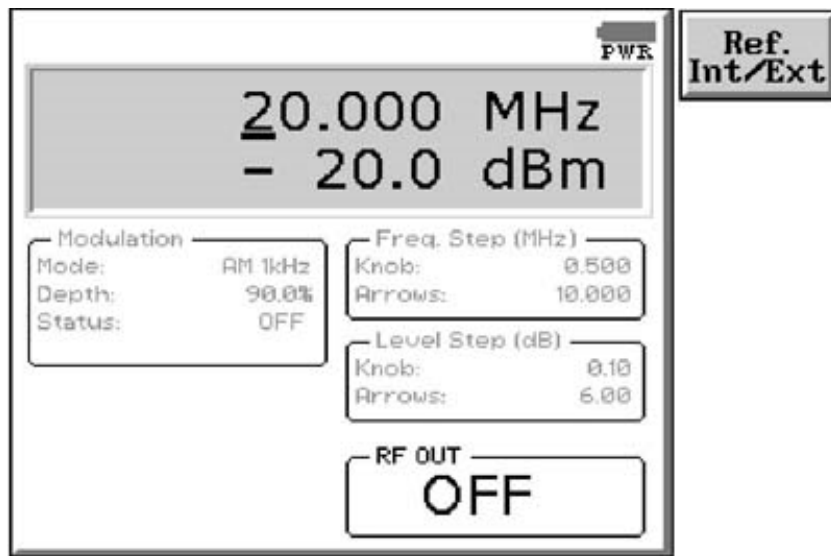


Entering the **Misc** menu it is possible to select the Internal Frequency Reference or the External one.

In the first situation (Int. Ref.) the internal 10 MHz precise TCXO is selected and a 10 MHz, 0 dBm output signal becomes available at the REF connector on the rear panel, what could be useful to synchronize other instruments.

When the Ext. Ref. is selected the REF connector becomes an input which an external 10 MHz, 0 dBm signal should be connected to.

The impedance for both output and input reference is 50 Ω.



### 3.5 Panel



The Panel function allows the User to store up to 2 different setups that can be recalled any time.

Pressing **Save #1** or **Save #2** the actual setup is stored in the internal memory; with the two **Recall** buttons the corresponding setup is recovered from receiver's memory.

Please remember each time one of the Save buttons is pressed, the stored set-up is overwritten by the new one: the saved setups are therefore kept memorized in the receiver until a new set-up is stored in the same memory.

The **Default** button can be used to load a factory default setup saved into the memory as standard settings at time of manufacturing.



**This page has been left blank intentionally**

## 4 – Operating Instructions

### 4.1 Introduction

PMM 3010-3030 has been designed with an user friendly interface to be easily operated by EMC engineers as well as by not-skilled personnel. All the functions can be recalled through front panel keyboard and rotary knob.

In the previous chapter it has been already explained that diagnostic information are displayed after switching ON the unit and, soon after, the screen is automatically switched to the Main Operating Window, where it will be possible to select all operating conditions for 3010-3030 generator.

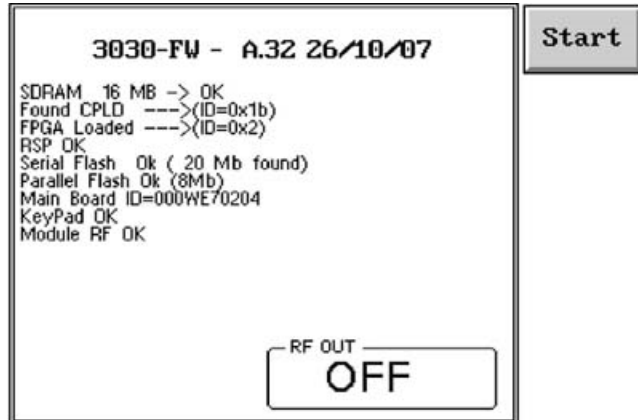
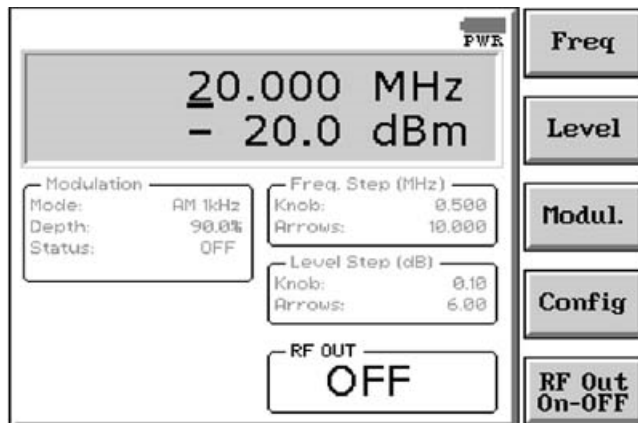


Fig. 4-1 Start-Up Screen



In case the screen would not be switched automatically to the operating one for some reasons, press the **Start** function key to enter the **Operating Window**, which allows the operator to set the Frequency, Level, Modulation, Configuration and Enable/Disable of the RF Output of the generator.



This is the operating mode in which the instrument works as a common stand alone signal generator.

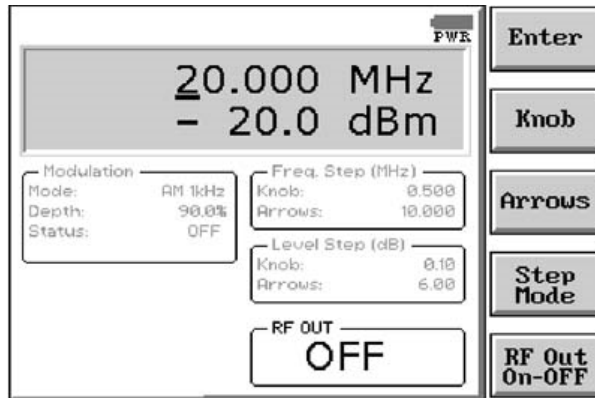
On the screen of the operating mode all the relevant information are reported. In the 3D gray box the User can read the generator frequency and level; in the other smaller boxes are the information concerning Modulation, Frequency step, Level step and the status of the RF Output.

## 4.2 Frequency

Pushing **Freq** button opens a sub-menu.



The Frequency menu is divided into five sub functions:



- Enter
- Knob
- Arrows
- Step Mode
- RF Out On-OFF

To adjust the frequency value the operator can underline proper digit simply pressing the **Left (←)** and **Right (→) Arrows** keys on the front panel, then decrease or increase the value by rotating the **Rotary Knob**.



**Always use Esc button to return to the previous view/condition.**



This button is used to enter the numerical value of desired frequency. When it is pressed, the PMM 3010-3030 shows a small window in the bottom left corner of the display, in which the set frequency will appear. The value is entered by pressing the five **Function Keys** on the right side of the display. Using **Left (←)** and **Right (→) Arrows** keys, displayed values will be scrolled, providing alternatively **0 to 4** or **5 to 9** numbers, **Frequency Units**, **Dot Pitch** and **Back Space**; proper value to be input will then be selectable through one of the five Function Keys.

Pressing **0** as first number the decimal dot appears automatically.

Input of selected value will be completed soon after pushing the Frequency Unit button (kHz, MHz or GHz).

With the **Esc** button the original view can be restored at any moment.



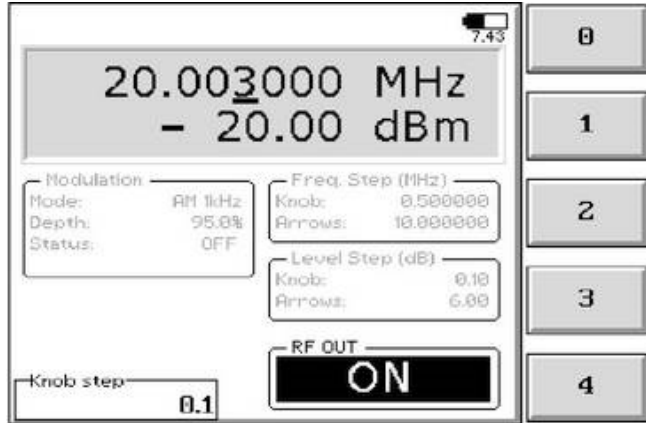


**Knob**

Allows the User to set the **Tuning Frequency Step** associated to the **Rotary Knob**.

To input desired Step in frequency simply use the Function and Arrows Keys as for the previous Enter button.

After pressing the **Knob** button, at the bottom left corner of the screen the small window showed below appears.



The frequency step of the rotary knob can be directly edited into this window, inputting data through the five Function Keys as usual.

Using **Left** (←) and **Right** (→) **Arrows** keys, displayed values will be scrolled, providing alternatively **0 to 4** or **5 to 9** numbers, **Frequency Units**, **Dot Pitch** and **Back Space**; proper value to be input will then be selectable through one of the five Function Keys.

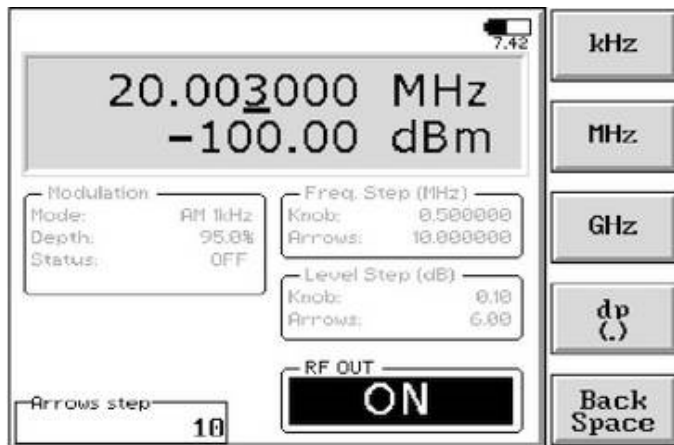
Pressing **0** as first number the decimal dot appears automatically.

Input of selected value will be completed soon after pushing the Frequency Unit button (kHz, MHz or GHz).

For instance, default unit is MHz, then it could be also possible to input for example 100 kHz as 0,1 soon followed by **Return** (↵), or 10 kHz as 0,01 and 1 kHz as 0,001, always followed by **Return** (↵).

**ARROWS**

This button works like the Knob one, but defines the **Frequency Step** used to increase or decrease the generator frequency **through the Left** (←) **and the Right** (→) **Arrows** keys on the front panel.

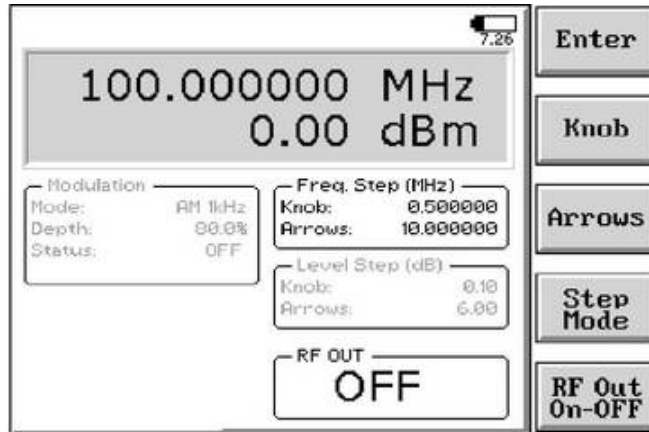


**Step Mode**

Pressing this key the User toggles between the two modes of operation in which the frequency can be changed or **“by the Cursor & Knob”** or **“by the Steps through the Knob and the Arrow Keys”**.

When the Step mode is activated, the digit underline (cursor) disappears and the section named “Freq. Step (MHz)” becomes black, which means these values become active for frequency changes by Knob or Arrows, according to respective steps previously set in corresponding menus.

When the Cursor & Knob mode is returned, pushing again the Step Mode button, the “Freq. Step (MHz)” window becomes gray to indicate Step Mode through Knob and Arrows is not active anymore.



**RF Out On-OFF**

The fifth button in the Frequency menu is used to switch the RF Output On or OFF.

When the RF Output is active the corresponding “ON” indication on the screen is highlighted.



**CAUTION**

To prevent accidental damage of PMM 3010-3030 or other equipments connected in the testing chain (amplifier, power meter, etc.), be sure all devices are properly connected before switching ON this RF generator.

**WARNING**

In case of using PMM 3010-3030 connected to amplifiers and antennas in chain, be sure to keep all doors of protected shielded enclosure properly closed before switching ON the RF Output, in order to avoid any possible injury by electromagnetic pollution and subsequent legal actions by local government.

**NOTE**

It is possible to take advantage of the INTERLOCK function by, for example, connecting a switch on the door of the cell or the room, to the 3030 User Port. Please refer to par. 2.11 to find the information concerning how to connect an external Interlock switch.

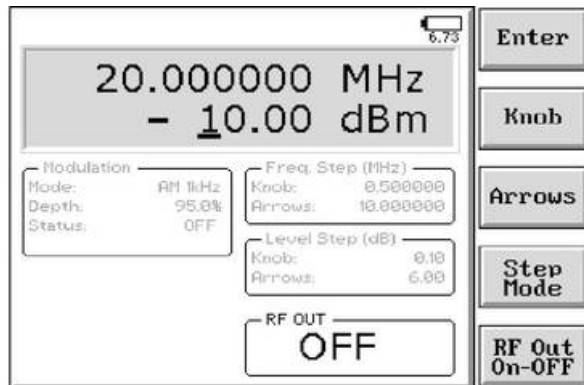


### 4.3 Level

Pushing **Level** button opens a sub-menu.



The Level menu is again divided into five sub-functions:



- Enter
- Knob
- Arrows
- Step Mode
- RF Out On-OFF

In this mode the RF Output Level can be adjusted by pressing the Arrow Keys to move the cursor below desired digit, then rotating the Knob on the front panel to increase or decrease the output level.



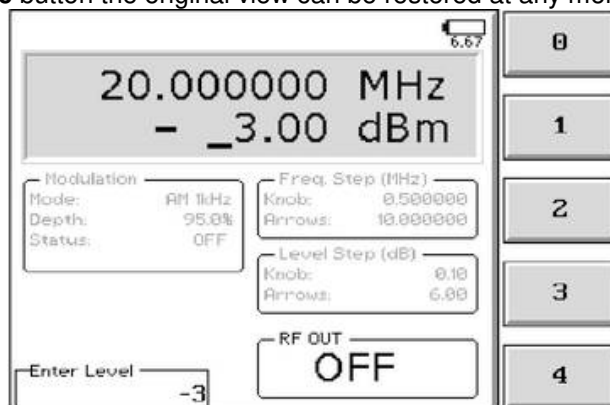
**Always use Esc button to return to the previous view/condition.**



This button is used to directly input the numerical output level. When it is pressed, the PMM 3010-3030 shows a small window at the bottom left corner of the display, in which the new value will be inserted. The value is entered by pressing the five **Function Keys** on the right side of the display. Using **Left** (←) and **Right** (→) **Arrows** keys, displayed values will be scrolled, providing alternatively **0 to 4** or **5 to 9** numbers, “+/-” sign, **Dot Pitch** and **Back Space**; proper value to be input will then be selectable through one of the five Function Keys.

Pressing **0** as first number the decimal dot appears automatically. Input of selected value will be completed soon after pushing the **Return** (↵) button on the front panel.

With the **Esc** button the original view can be restored at any moment.

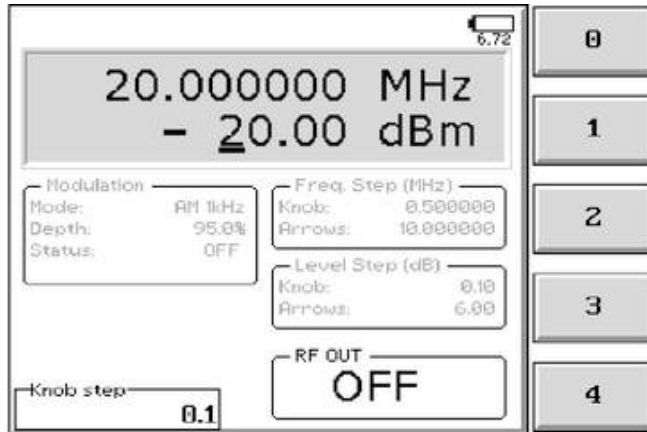


**Knob**

Allows the User to set the **Output Level Step** associated to the **Rotary Knob**.

To input desired Step in frequency simply use the Function and Arrows Keys as for the previous Enter button.

After pressing the **Knob** button, at the bottom left corner of the screen the small window showed below appears.



The frequency step of the rotary knob can be directly edited into this window, inputting data through the five Function Keys as usual.

Using **Left (←)** and **Right (→) Arrows** keys, displayed values will be scrolled, providing alternatively **0 to 4** or **5 to 9** numbers, **“+/-” sign**, **Dot Pitch** and **Back Space**; proper value to be input will then be selectable through one of the five Function Keys.

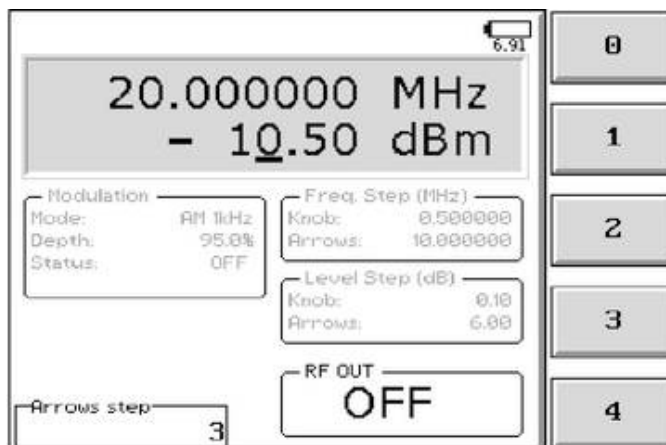
Pressing **0** as first number the decimal dot appears automatically.

Input of selected value will be completed soon after pushing the **Return (↵)** button on the front panel.

The default unit is dBm (dBμV can be selected from the Config menu in the initial screen).

**Arrows**

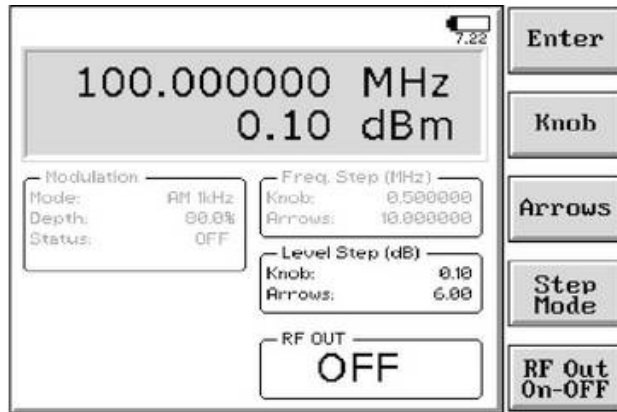
This button works like the Knob one, but defines the **Level Step** used to increase or decrease the generator frequency **through the Left (←) and the Right (→) Arrows** keys on the front panel.





Pressing this key the User toggles between the two modes of operation in which the output level can be changed or “by the Cursor & Knob” or “by the Steps through the Knob and the Arrow Keys”.

When the Step mode is activated, the digit underline (cursor) disappears and the section named “Level Step (dB)” becomes black, which means these values become active for output level changes by Knob or Arrows, according to respective steps previously set in corresponding menus. When the Cursor & Knob mode is returned, pushing again the Step Mode button, the “Level Step (dB)” window becomes gray to indicate Step Mode through Knob and Arrows is not active anymore.



The fifth button in the Frequency menu is used to switch the RF Output On or OFF.

When the RF Output is active the corresponding “ON” indication on the screen is highlighted.



In order to provide the User with signals even lower or higher than those in specifications (guaranteed ones), the actual minimum level that could be displayed on the screen is -107 dBm, while the maximum could be +10 dBm.



To set the appropriate unit for your convenience it is simply necessary to go to the Setup mode and enter the Unit selection menu as described in paragraph 3.3.



To prevent accidental damage of PMM 3010-3030 or other equipments connected in the testing chain (amplifier, power meter, etc.), be sure all devices are properly connected before switching ON this RF generator.



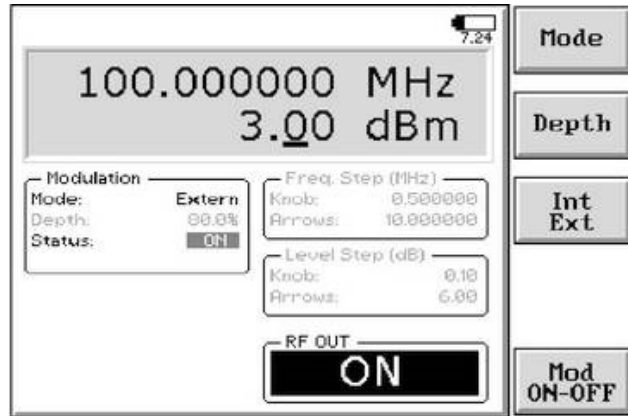
In case of using PMM 3010-3030 connected to amplifiers and antennas in chain, be sure to keep all doors of protected shielded enclosure properly closed before switching ON the RF Output, in order to avoid any possible injury by electromagnetic pollution and subsequent legal actions by local government.



When the INTERLOCK protection function is activated, it is not possible to switch On the RF OUT.

4.4 Modulation

The Modulation menu has four sub-functions:



- Mode
- Depth
- Int/Ext
- Mod ON-OFF

In this mode the output power level can still be changed by Cursor & Knob if the Level was lately chosen before entering the Modulation screen, simply moving the cursor below the desired digit and rotating the knob on the front panel to increase or decrease it.



By pressing the **Mode** key it is possible to select the proper modulation mode between the following two submenus:

**Sine Mod.**

- AM 2 Hz,
- AM 50 Hz
- AM 400Hz
- AM 1 kHz

**Pulse Mod.**

- Pulse 1 Hz 1:2
- Pulse 100 Hz 1:2
- Pulse 200 Hz 1:2
- Pulse 1 kHz 1:2
- Pulse 100 Hz 1:24
- Pulse 200 Hz 1:8
- Pulse 217 Hz 1:8

The chosen Mode is shown in the Modulation section, which becomes black in color on the display.

The fractional value following the frequency repetition of each pulse modulation is the duty cycle of the On-Off-Keying that is to say the time the carrier is on against the time it is off.

After selecting desired mode press **Mod ON-OFF** button to activate the modulation. In the same way, pressing again the key, the modulation is switched back OFF. Selected Status is always displayed in the same section.



Not only modulation frequency and mode are selectable, but also **Modulation Depth** can be adjusted. Pressing this key the User can input the modulation depth percentage. The percentage is shown in the Modulation section on the display.

The generator is internally equalized to get the same modulation depth over the whole frequency band.



This function key works as a toggle switch to select between the internal modulating sources and the external one.

The corresponding indication is shown in the Modulation section at left side of the screen.

When the internal modulation is chosen the related mode can be selected by the **Mode** key as described.

Setting the External modulation the generator uses the signal coming from the MOD connector, located on the rear panel, as the source for the RF modulator.

**Pay attention not to overload the External Modulation input. The maximum allowed voltage is 10 Vpp with high impedance. Connect your source only if you are pretty sure you're providing less than 10 Vpp (about 131 dBμV).**



**Before to apply an unknown signal to PMM 3010-3030 generator, use an oscilloscope or an audio frequency voltmeter to measure it.**

**If needed, add an external high impedance attenuator on the input signal line.**

**An Overload indication will automatically appear on the screen to inform the Operator that the level of the applied signal for external modulation is too high: to avoid errors and even damages to the generator it is then necessary to reduce the voltage of the modulating signal.**



**When the modulation is activated the maximum available output power level is reduced by 6dB.**

**So, using modulated signals, the max available power level is +4dBm. It is still possible to set the level up to +10 dBm but they may be unlevelled.**



**When the AM modulator is active the level displayed is, as the theory defines, the power of its carrier. So, for example, when a 0 dBm fully modulated signal is generated, the effective output power is about +1.76 dBm.**



**When the PULSE modulator is active the level displayed is the one for which a 1/2 pulse modulation produces the same average power as an unmodulated carrier.**

**For duty cycles of modulation different from 1/2 (es. 1/8 or 1/24) the peak is maintained the same as for the 1/2.**





With the last key appearing in the **Modulation** functions menu it is possible to enable or disable the modulator.

This is a toggle switch by which the modulation can be set either ON or OFF; default is not active.

In the Modulation section on the screen the Status is always displayed.

The modulator of the PMM 3010-3030 runs in an innovative way. Along its path, the modulating signal is at first converted in digital by an ADC module, then conditioned by the internal DSP chain and, soon after, converted in analog voltage again by a fast DAC circuit. Such analog voltage is then used to modulate the carrier through a linear RF modulator.

The aim of this numeric approach is to guarantee linear, stable and versatile modes of modulation with any base band frequency that even future rules and recommendations could require.



## 5 – PMM WIN3030 Software



### 5.1 Introduction

PMM WIN3030 is a PC utility developed to drive the PMM 3010/3030 Signal Generator directly through a PC.

In addition to the PMM Immunity Suite it is an useful tool to use the RF generator from remote, still having all features available and even more.

It is possible to set the frequency and level of the signal to be generated and also to activate one of the modulations available.

The RF output can be switched On and Off and some presets can be saved and recalled.

### 5.2 System requirements

The minimum requirements to allow the software to operate properly are the following:

- 486 Processor or Pentium
- 16 Mb of RAM
- at least 32 Mb of free space on hard disk
- 1 free Serial Port (RS-232), or, alternatively, a USB
- Windows Operating System™ 98se/2000/XP/Vista/Win7

### 5.3 Preparing the Hardware

Turn ON the PMM 3030 or 3010 and connect the RS-232 cable supplied with the apparatus directly or through a USB/RS-232 Adapter separately purchased (once related driver has been properly installed), to the 9 pin socket situated on the back panel of PMM 3030(3010) on one side and to a free RS232 port (or USB in case of Adapter's use) on the PC side. A USB connection can also be alternatively used.

The RS-232 proper COM port will be selected in the Settings section of the software. In case of troubles please check port assignments on the PC through the Control Panel utility.

### 5.4 Software Installation

The WIN3030 program is provided together with the PMM 3030 Software, stored on Software Media and included in PMM 3030 Generator package; anyway it's always possible to check for newer releases and download them from official NARDA Italy Web Site Support page.



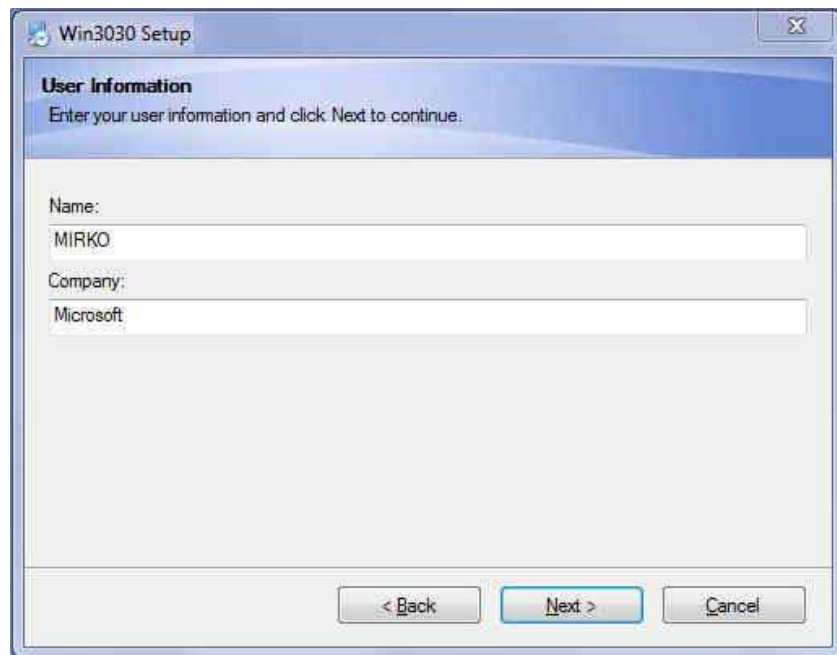
**The User must have administrator privileges to install the WIN3030 in Windows 7; right click on the program .exe file and click on "Run as administrator" to temporarily run the program as an administrator until close it (Windows 7 also allows to mark an application so that it always runs with administrator rights).**

PMM WIN3030 Software is supplied with its installation procedure.

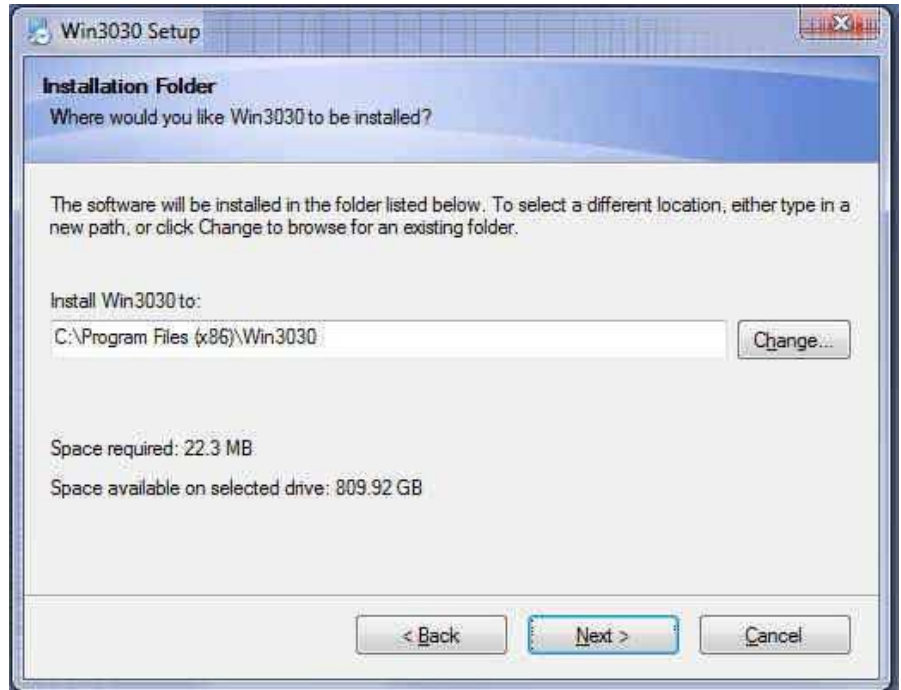
To install the software run WIN3030 Setup:



Please continue the setup following the instructions on the screen.



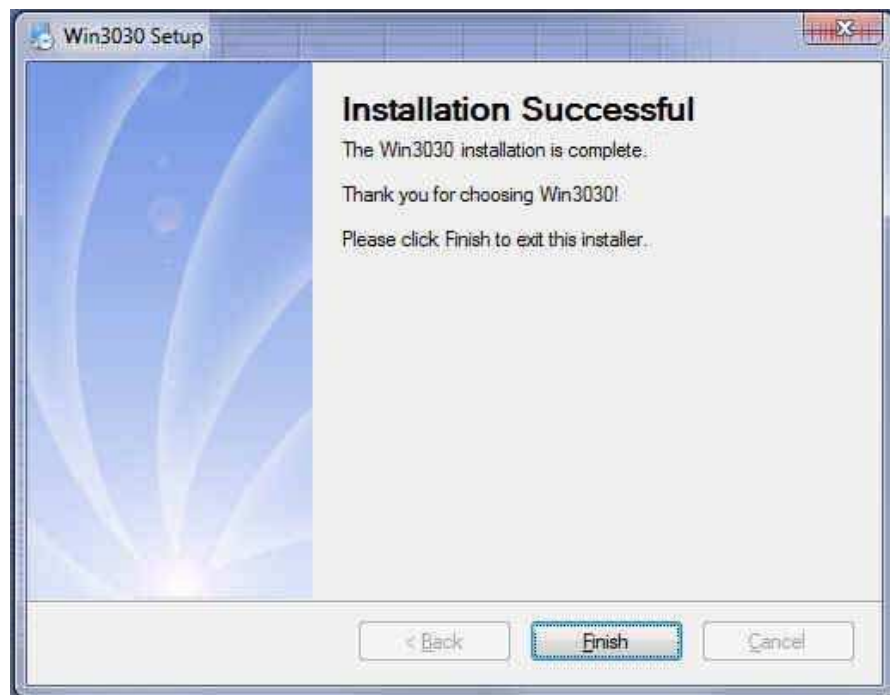
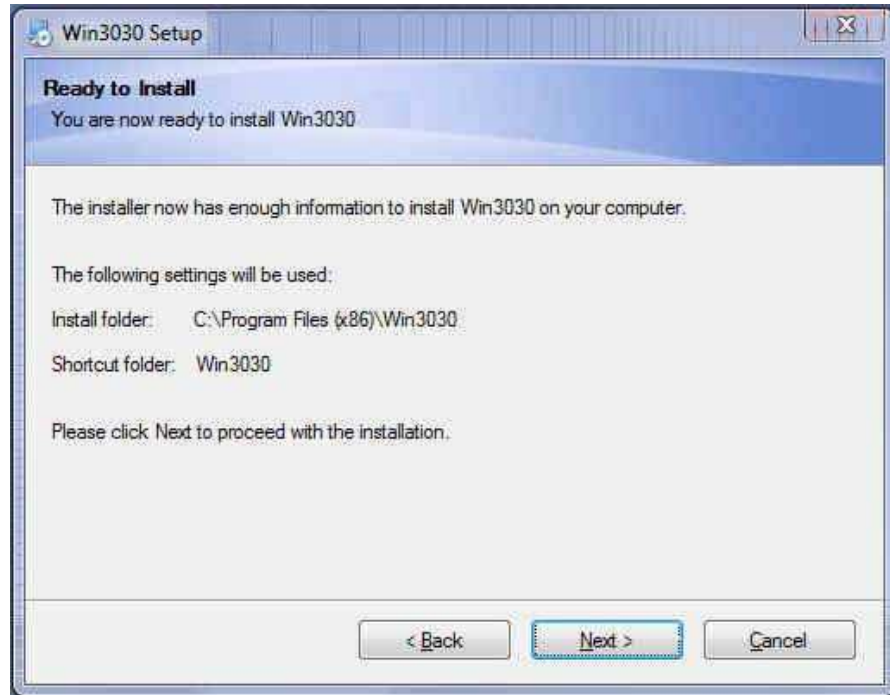
It is requested to complete the form with your name and company.



Then the user can choose the directory where the software will be installed to.

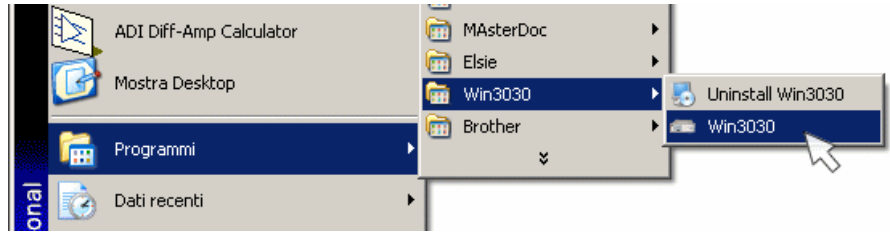


The user will be asked if the installation must be available to all users or only the current one.



When the process is completed the above message appears.

### 5.5 Running the Utility



To run the software simply look for it in the Programs bar and click the Win3030 icon.

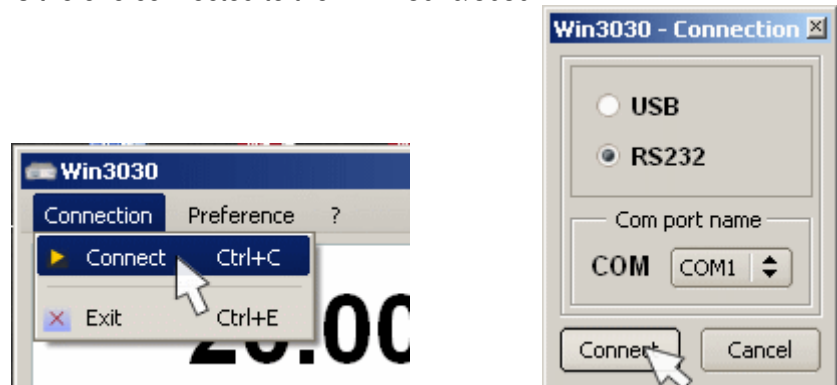


**The User must have administrator privileges to run the WIN3030 in Windows 7; right click on the program .exe file and click on “Run as administrator” to temporarily run the program as an administrator until close it (Windows 7 also allows to mark an application so that it always runs with administrator rights).**

### 5.6 Connection Port

To set the correct communication port, between USB and RS232, open the Connection menu and select the option desired.

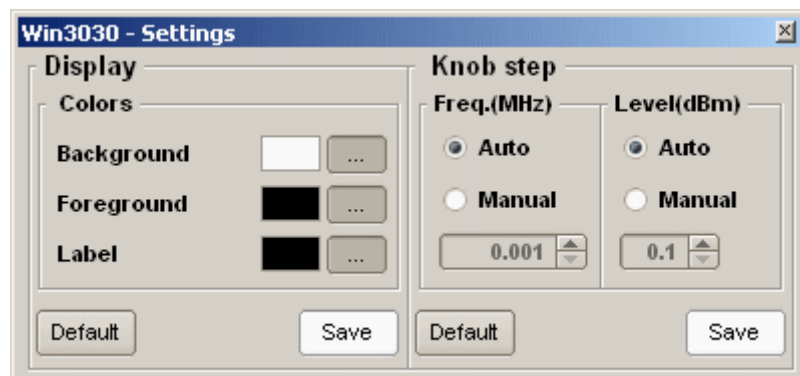
When the serial RS232 port is to be used, please choose which COMn port is the one connected to the PMM 3010/3030.



### 5.7 Settings

It is possible to vary the aspect by changing the colours and also to set the Frequency and Level steps desired.

By pressing the Default button the values go back to the factory settings.



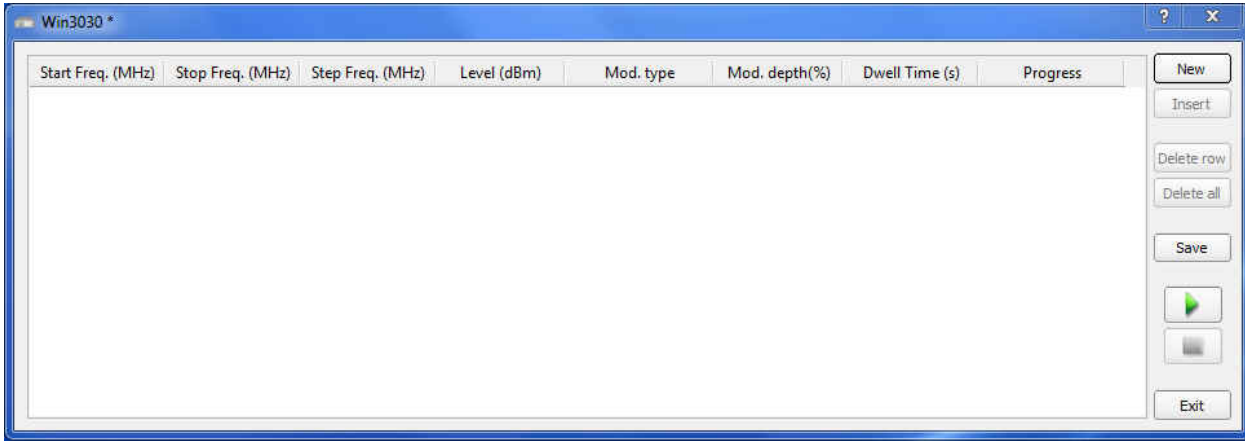
### 5.8 Sweeps

In **Sweeps Mode** is possible automatically and repetitively generate an output waveform in the frequency range and level selected.



To switch into the **Sweep Mode** simply select "Sweeps" Tab and **New**.

Alternatively with **Load** you can quickly use the same parameters of a previous Sweep test stored and eventually change some of them.



To define each Sweep Test settings clicking on **New** located on the right panel

To modify the value of each function select with double-click the corresponding box:

	Start Freq. (MHz)	Stop Freq. (MHz)	Step Freq. (MHz)	Level (dBm)	Mod. type	Mod. depth(%)	Dwell Time (s)	Progress
1	0.009	3000	0.001	-107	OFF	---	0.1	0%

- The **Start** and **Stop** frequency (expressed in MHz) is used to set any frequency interval for the measurement.
- The **Step Freq.** is used to set the steps of the Sweep.
- The **Level** is used to set the output level in dBm.
- The **Mod.** is used to switch the modulation OFF or select between internal modulating sources or external one.
- The **Mod. Depth (%)** is used to enter the modulation depth percentage.
- The **Dwell Time (s)** is the time interval (in seconds) between the previous step and the current step.

Through the right panel you can add a new row below (**New**) or above (**Insert**) the selected row, delete a single row (**delete row**) or delete all table (**delete all**).

When all Sweep Test parameters are set you can **Save** the table on desired folder and **Start** the sweep clicking on ; the percentage of the sweep is shown inside the progress bar.

During the session you can **Pause** or **Stop** the sweep.

**Exit** to close the Table.



## 5.9 Operation

In the main window it is possible to set the Frequency and Level of the signal to be generated.

### 5.9.1 Cursor



The cursor indicates which digit will be varied by rotating the knob on the screen.

To move left or right through the digits use the **Left** (←) and **Right** (→) arrow keys located under the knob.

### 5.9.2 Knob



The value over the cursor can be changed by pointing and rotating the graphical knob on the screen with the mouse or clicking on the **Up** (↑) and **Down** (↓) keys located under the knob or pushing the arrow keys on the keyboard of your PC.

### 5.9.3 Frequency and Level

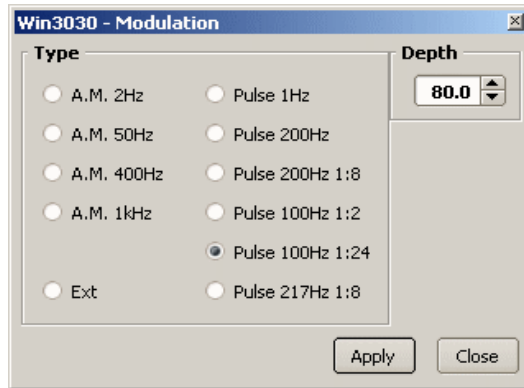
Press the Frequency or Level keys to chose which parameter is to be changed.



The frequency and level values can also be entered using the softkeyboard. After entering the digits, with the eventual decimal point, of the frequency value, it is necessary to press the unit among MHz and GHz. The same for the level where the unit can be dBm, for positive values and -dBm, for negative values.

**5.9.4 Modulations**

Press the MOD button to change the modulation mode, as shown in the following picture.



For the AM types it is also possible to adjust the depth of modulation.

**5.9.5 MOD ON-OFF**



Press the button under MOD to switch ON or OFF the modulation selected.

**5.9.6 RF ON-OFF**



Press RF button to switch the output ON or OFF.



**Make sure all ancillaries (attenuators, cables, amplifier, antennas) and the devices under test are ready prior to switch ON the output.**



## 5.10 Uninstall

To remove the software choose uninstall from Start menu.



**This page has been left blank intentionally**

## 6 – Remote control

### 6.1 Introduction

PMM 3010-3030 has been designed to allow remote control operations through its either RS232 or USB (Rear) ports.

When using RS232 you can use only one instrument connected to PC serial port. If using USB you can connect other instruments to the free RS232 port and the PMM 3010-3030 Generator to the USB 2.0.

PMM 3010-3030 uses the same commands protocol for both communications.

### 6.2 Communication

Half duplex communication is implemented. The RS232 port has a DB-9 female connector and the USB 2.0 has a USB-B connector.

A built-in automatic tool identify the type of communication used.

Standard communication is implemented at 115200 bit/sec with 8 bit words, one stop bit and no parity (115200 N 8 1).

It is also possible to set the RS-232 bitrate at 9600 and 38400 bps.

### 6.3 Protocol

Be aware that only the PC can send the commands. PMM 3010-3030 will answer when is inquired only.

The communication uses strings with variable length. The characters used inside the strings are in ASCII format (00 - 127) at 7 bits. The most significant bits are ignored in reception and set to 0 during transmission.

Every string starts with the special character “#” and stops with “\*”.

### 6.4 Format

Commands are made of ASCII strings delimited by the characters “#” (0x23) and “\*” (0x2A)

Replies are terminated with <CR><LF> (\r\n)

## 6.5 PMM 3010-3030 COMMANDS

Following are Commands to control and set various operating modes of PMM 3010-3030, that can be distinguished in two main groups:

- Query Commands
- Setting Commands

### 6.5.1 QUERY Commands

#### Description

<b>?IDN</b>	<p>This query command <b>#?IDN*</b> sends back a string containing information about model, release and date of firmware          Note that two &lt;LF&gt; are appended to the string before the terminator.          Example of reply: <b>IDN=3030.FW – 1.12 20/10/07</b>&lt;LF&gt;&lt;LF&gt;</p>
<b>?S/N</b>	<p>This query command <b>#?S/N*</b> sends back a string containing 3010-3030 serial number internally stored by manufacturer.          Example of reply: <b>S/N=000WE50327</b></p>
<b>?CFR</b>	<p>This query command <b>#?CFR*</b>sends back a string expressing the tuning frequency.          Example of reply:<b>CFR= 20.000MHz</b> which means that the tuned frequency in manual mode is 20MHz</p>
<b>?CLV</b>	<p>This query command <b>#?CLV*</b>sends back a string expressing the RF OUT Level expressed in dBm regardless the set unit in the 3010-3030          Example of reply:<b>CLV= -20.00</b> which means that the level carrier is -20dBm</p>

**?RFO** This query command **#?RFO\*** sends back a string expressing the status of RF OUTPUT to N connector  
The reply is either **RFO= Off** or **RFO=On**

**?MOD** This query command **#?MOD\*** sends back a string expressing the Modulation Status.  
The reply is a string divided into 3 fields as follows:  
**MOD=** Type, Depth, Status  
Where:

- Type is the kind of modulation and can be among the following
  - Ext
  - AM 1kHz
  - AM 400Hz
  - AM50Hz
  - AM2Hz
  - Pulse 200Hz
  - Pulse 1Hz
  - Pulse 100Hz 1:2
  - Pulse 100Hz 1:24
  - Pulse 200Hz 1:8
  - Pulse 217Hz 1:8
  - Pulse 1 kHz 1:2
- Depth is the depth of modulation
- Status shows whether modulation is ON or OFF

Here below are some reply examples.

MOD=AM 1kHz:90.0%;OFF  
 MOD=AM 400Hz:90.0%;OFF  
 MOD=Ext:90.0%;OFF  
 MOD=AM 400Hz:10.0%;ON

**?UPP** This query command **#?UPP\*** sends back a string expressing the status of PINs of the User port.  
Each Pin has own contribution according to its index as follow:  
 $IN0=2^0$   
 $IN1=2^1$   
 $IN2=2^2$   
 $IN3=2^3$  (Note: this input is used for INTERLOCK Purpose)  
 Thus, the number read back is the sum of each weighted contribution

Example of reply: UPP=5 means that User port Pins IN0 and IN2 are high-level while user port Pins IN1 and IN3 are low-level

**?DPY** This query command **#?DPY\*** sends back a bitmap of display hardcopy

**?TMP** This query command **#?TMP\*** sends back a string expressing the internal 3010-3030 temperature in degree centigrade.  
Example of reply: TMP=26.50

## 6.5.2 SETTING Commands

**SCFR f** This setting command sets the tuning frequency. The string (f) can be in exponential form and should be expressed in MHz. The reply is **CFR=OK** which acknowledges the command has been granted or **CFR=SERR** if the command has been ignored.

Example: **#SCFR 150\*** Sets the carrier frequency to 150 MHz

**SCLV l** This setting command sets the level of carrier. The string (l) can be in exponential form and should be expressed in dBm. The reply is **CLV=OK** which acknowledges the command has been granted or **CLV=SERR** if the command has been ignored.

Example: **#CLV -20\*** Sets the level of carrier to -20 dBm

**SRFO stat** This setting command switches Off or On the RF OUT on N connector. The string "stat" must be either OFF or ON otherwise the command is ignored. The reply is **RFO=OK** which acknowledges the command has been granted or **RFO=SERR** if the command has been ignored.

If "stat" = ON and the INTERLOCK signal, User Port IN3 (refer to par. 2.11) is active, the command has no effect and the reply is **RFO=ILCK**.

When "stat" = OFF the INTERLOCK signal is ignored, thus the reply is RFO=OK regardless its state.

Example: **#RFO ON\*** switches ON or OFF RF OUT on N connector

Example: **#RFO ON\*** (while INTERLOCK is On) does not change the RF Out on N connector.

**SMON stat** This setting command switches OFF or ON the modulation. The string "stat" must be either OFF or ON otherwise the command is ignored. The reply is **MON=OK** which acknowledges the command has been granted or **MON=SERR** if the command has been ignored

Example: **#SMON ON\*** turns the modulation ON

**SMDE d** This setting command sets the depth of modulation. The string (d) can be in exponential form and should be expressed in percent. The reply is **MDE=OK** which acknowledges the command has been granted or **MDE=SERR** if the command has been ignored.

Example: **#SMDE 50\*** sets the depth of modulation to 50.0%

**SMTY id**

This setting command sets the type of modulation. The reply is **STY=OK** which acknowledges the command has been granted or **STY=SERR** if the command has been ignored. The index (id) selects among the following list:

0. Ext
1. AM 1kHz
2. AM 400Hz
3. AM 50Hz
4. AM2Hz
5. Pulse 200Hz
6. Pulse 1Hz
7. Pulse 200Hz 1:8
8. Pulse 100Hz 1:2
9. Pulse 100Hz 1:24
10. Pulse 217.4 Hz 1:8
11. Pulse 1 kHz 1:2

Note that when modulation source is changed from Internal to external or vice versa, before the change takes place, the modulation must be OFF. Therefore, if the state is ON the command "SMON OFF" should be issued.

Example: **#SMTY 1\*** sets the type of modulation to AM 1kHz

**SUPP n**

This setting command **#SUPP n\*** output on the User port bit by bit the argument n: Each Pin has its own contribution according to its index as follows:

OUT0=2<sup>0</sup>  
OUT1=2<sup>1</sup>  
OUT2=2<sup>2</sup>  
OUT3=2<sup>3</sup>

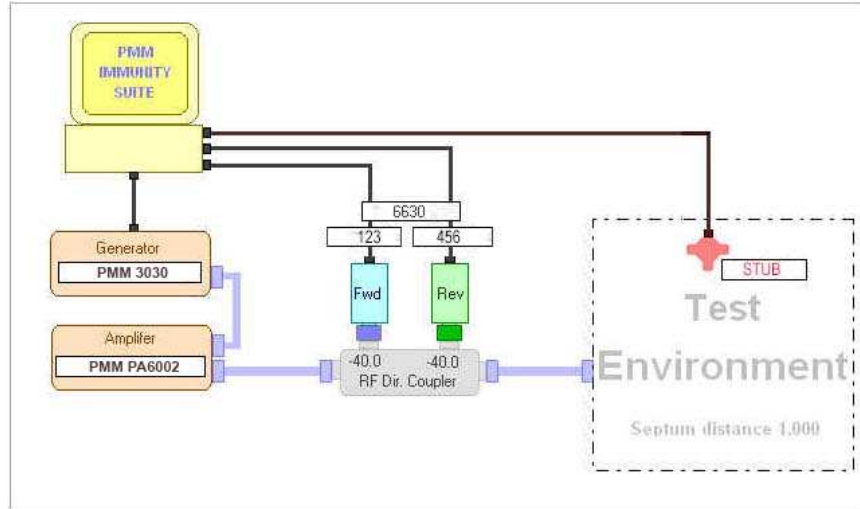
Thus, the argument sent is the sum of each weighted contribution. The reply is **UPP=OK** which acknowledges the command has been granted or **UPP=SERR** if the command has been ignored (IE argument>31)

Example: SUPP 5 will set

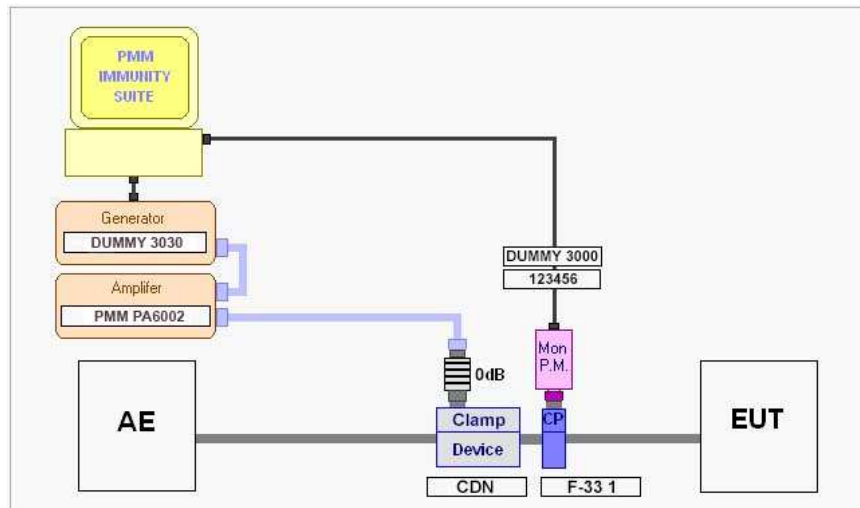
- User Port pins OUT0 and OUT2 to high level
- User Port pins OUT1 and OUT3 are low level

**6.6 PMM Immunity Suite Software**

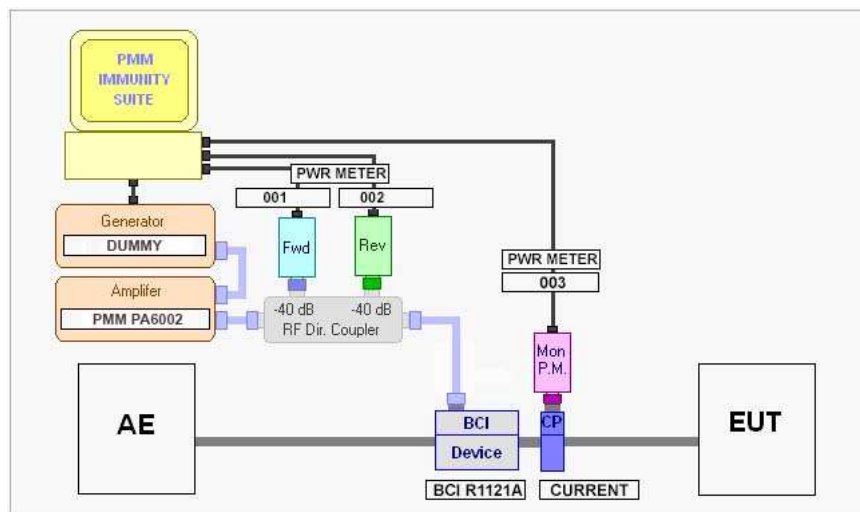
Refer to PMM Immunity Suite Operating Manual for the instructions concerning how to use the PMM 3010-3030 within the Immunity system software.



**Fig. 6-1 Radiated immunity**



**Fig. 6-2 Conducted immunity**



**Fig. 6-3 Automotive immunity (bulk current and stripline tests)**



## 7 - Updating firmware

### 7.1 Introduction

The PMM 3010-3030 features a simple and user-friendly method for updating its internal firmware through a Personal Computer (PC). This section provides all the information required for easy updating.

### 7.2 System requirements

The minimum requirements to allow the software to operate properly are the following:

- 486 Processor or Pentium
- 16 Mb of RAM
- at least 10 Mb of free space on hard disk
- 1 free Serial Port (RS-232), or, alternatively, a USB/RS-232 Adapter with related driver
- Windows Operating System™ 95/98/2000/XP/Vista/Win7

### 7.3 Preparing the Hardware

Turn off the PMM 3010-3030 and connect the RS-232 cable supplied with the apparatus directly or through a USB/RS-232 Adapter separately purchased (once related driver has been properly installed), to the 9 pin socket situated on the back panel of PMM 3010-3030 on one side and to a free RS232 port (or USB in case of Adapter's use) on the PC side.

The first free RS-232 port will be automatically detected by the Firmware Update Program during installation. In case of troubles please check port assignments on the PC through the Control Panel utility.

### 7.4 Software Installation

The Update Firmware executable program is provided together with the 3010-3030 Software Utility, stored on Software Media and included in PMM 3010-3030 Signal Generator package; anyway it's always possible to check for newer releases and download them from official NARDA Italy Web Site Support page.

Once the **3010SeriesUp Setup** has been installed in the PC, another item is created in the Programs list at Start Menu, which is "**PMM 3030 Series**", from where the "**3030SeriesUp**" program can be easily run.



Click on “3030SeriesUp” (3030SeriesUp.exe) once for running the update program, so getting the following window:



Two firmware components can be updated by this application: Firmware, which is the receiver internal program, and FPGA, to update the internal programmable logic.

The **3030FW.bin** file required for Firmware updating and the **fpga3030.bin** file for FPGA are automatically stored in the same directory of the **3030SeriesUp.exe**, otherwise just copy them there before performing the upgrade.

**Be sure batteries of PMM 3030-02 and connected Laptop (PC) are fully charged before performing the FW Upgrade, otherwise the upgrade progress could not terminate properly.**

**Alternatively, be sure to have both PMM 3010-3030 and Laptop (PC) powered through their respective AC/DC power adapters.**

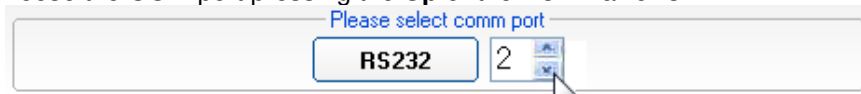


**Anyway, even in case of failure, the internal BIOS will never be corrupted and you'll just need to repeat the procedure once more (this is a unique feature!).**

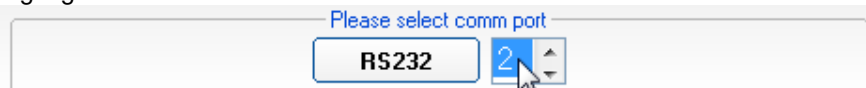
**Should FW Upgrade procedure stop before reaching the 100% completion that will have not to be considered a trouble but simply an intermediate step: in this case please switch OFF and ON the generator and repeat the FW Upgrade procedure once more until the end.**

**Always cycle power OFF and ON again after every FW Upgrade.**

Choose the COM port pressing the **Up** or the **Down** arrows.



Move the cursor to the COM port number and select the left mouse button to highlight the box.



Press **RS232** button or **Enter** key to set the com port.

The program will display the following window:

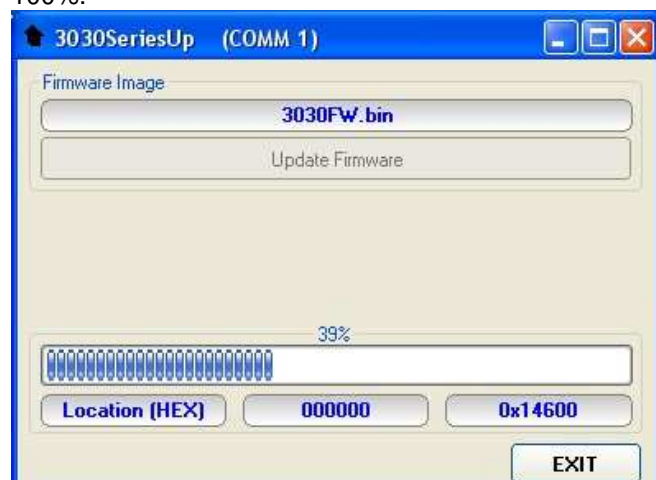


### 7.5 To transfer data

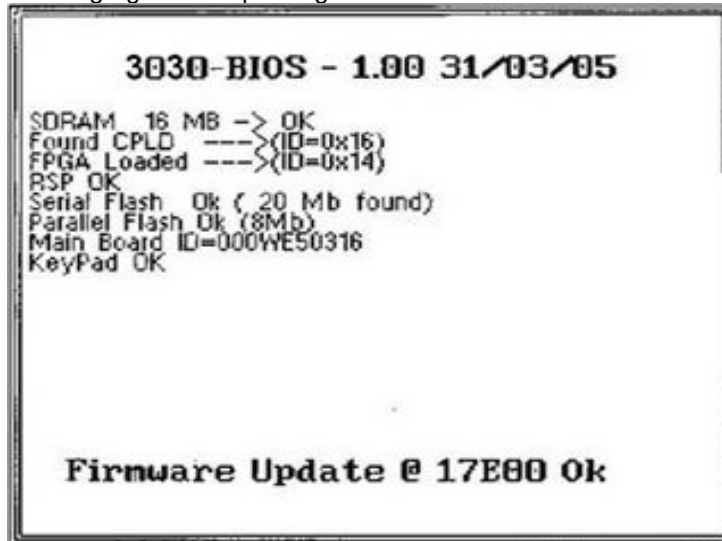
To start the process simply switch PMM 3010-3030 on, select **Update Firmware** or **Update FPGA** button, and wait until the automatic transfer is completed.



During the storing procedure, a blue bar will progress from left to right in the window of the PC, showing percentage of downloading time by time until 100%.



In the meanwhile on the 3010-3030 display the BIOS page appears, showing again the updating status



When FW download finishes, following message appears to show that everything was properly completed:



In case of failure, an error message is showed instead.

After Firmware Update is successfully completed, switch OFF and then ON again the PMM 3010-3030, looking at screen.

Now at the top of the display a different FW Release Number and Date is showed after "3030-FW -...", as per the following:

In case the release should not comply with what expected, just check about the FW file used during installation or get in contact with the nearest NARDA Local Distributor.

It is now possible to disconnect the cable connected to the PC, with the PMM 3010-3030 Generator either switched On or Off.



**To obtain up-to-date Firmware or PC Utility for PMM 3010-3030, the user can contact his NARDA distributor or download it directly from Support area of EMC Product Range on the following Web Site: [www.narda-sts.it](http://www.narda-sts.it).**

## 8 – PMM 9010-RMA Rack Mount Adapter for Rack 19” (Option)



### 8.1 Introduction

A **19-inch rack** is a standardized frame or enclosure for mounting multiple equipment modules. Equipment designed to be placed in a rack is typically described as **rack-mount** or simply **chassis**; the height of the electronic modules is standardized as multiples of 1.75 inches (44.5 mm) or one rack unit or "U". Each module has a front panel that is 19 inches (482.6 mm) wide, including edges that protrude on each side which allow the module to be fastened to the rack frame with screws.

### 8.2 Instrument Items

PMM 9010-RMA Rack Mount Adapter includes the following items:

- Rack Mount kit (screws, plastic round washers and cage nuts).
- Return for Repair Form.

### 8.3 Optional accessories

PMM 9010-RMA Rack Mount Adapter can be used with several optional accessories, the most common being the following:

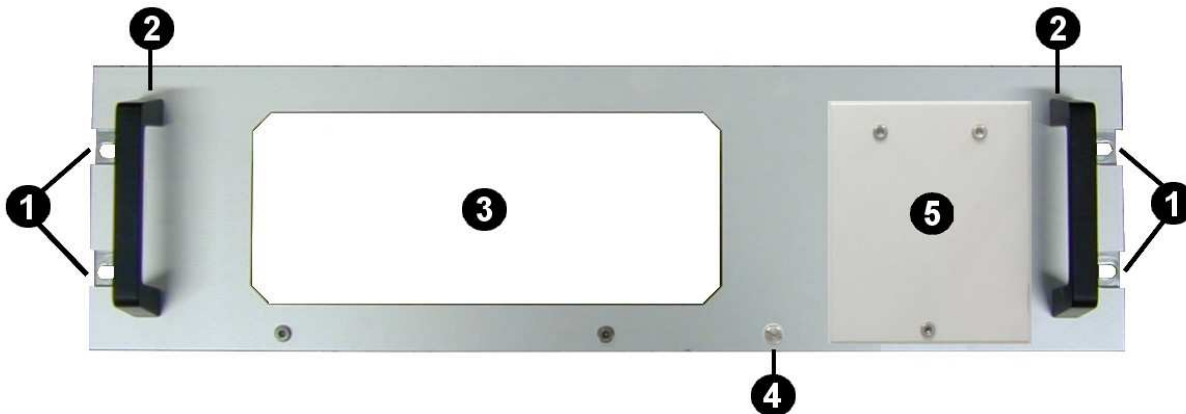
- PMM 3010 EMI Signal Generator 9 kHz ÷ 1 GHz;
- PMM 3030 EMI Signal Generator 9 kHz ÷ 3 GHz;

**8.4 PMM 9010-RMA  
Main Specifications**

Table 8-1 lists the PMM 9010-RMA specifications.

<b>TABLE 8-1 Technical Specifications</b>	
<b>Environment temperature</b>	0° to 40°C
<b>Rack unit</b>	3U
<b>Dimensions</b>	483 x 410 x 132.5 mm (WxDxH)
<b>Weight</b>	5,5 Kg (without instruments)

**8.5 PMM 9010-RMA Front view**

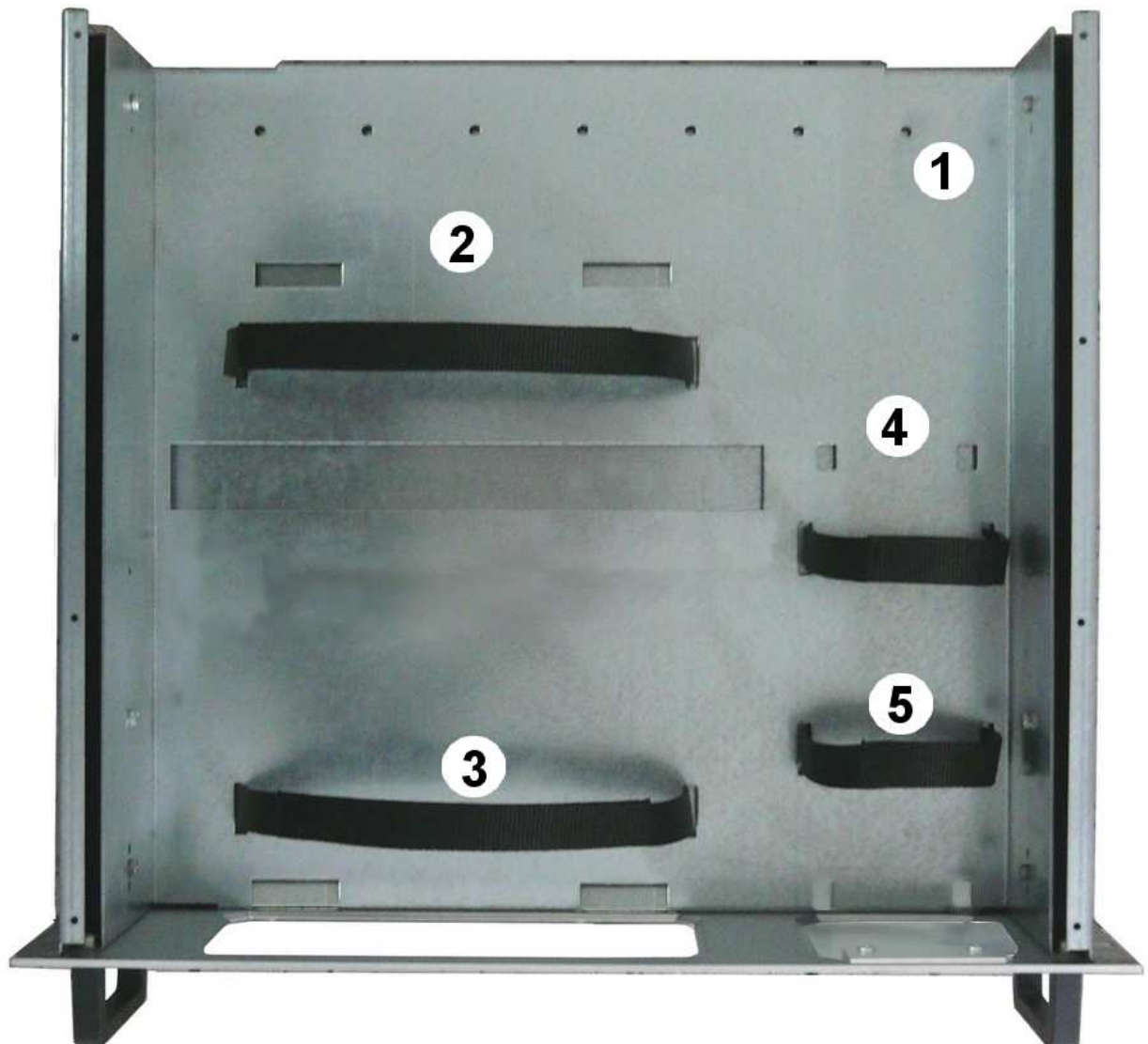


**Fig. 8-1** Front view

Legend::

- 1 – Holes Flanges used to fix the Rack Mount to the Rack
- 2 – Handles used to carry the Rack Mount
- 3 – PMM 3010 or 3030 window
- 4 – Milled knob used to fix the frontal panel to the Rack
- 5 – Cover for future implementation

## 8.6 PMM 9010-RMA Inside view



**Fig. 8-2** Inside view

**Legend::**

- **1** – Round holes of service
- **2** – Rectangular holes used to put 3010 or 3030 Instrument;
- **3** - 3030 or 3030 straps;
- **4** – Rectangular holes for future implementation;
- **5** – Straps for future implementation.



**8.7 Rack Requirements** The rack must be of the following type:

- Standard 19 inch (483 mm) with mounting rails that conform to English universal hole spacing per section 1 of ANSI/EIA-310-D-1992.
- The minimum vertical rack space per chassis must be 3U (rack units), equal to 3 inches (132.5 cm).

**8.8 Required Equipment** Before you begin the installation, ensure that you have the following items:

- Crosshead screwdriver (not provided)
- Flat-blade screwdriver or rack-insertion tool (not provided)
- Tape measure and level (not provided)
- Rack Mount kit (provided)

**8.9 Moving chassis** When lifting the chassis, be aware of its weight, and follow these guidelines:

- Disconnect all power and external cables before lifting the chassis.
- Remove all instruments from the chassis before lifting.



- **Make sure that the milled knob well locking.**
- Using the two handles, lift the PMM 9010-RMA slowly keeping your back straight. Lift with your legs, not with your back. Bend at the knees, not at the waist.



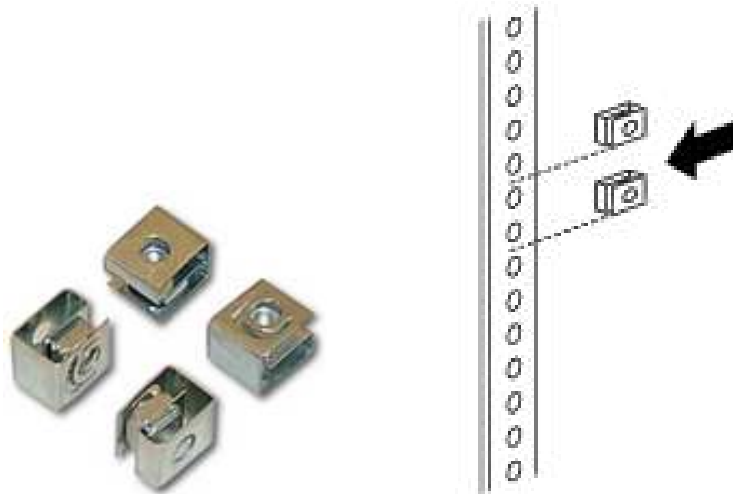
### 8.10 Installation guidelines

When installing the chassis, follow these guidelines:

- Plan your site configuration and prepare the site before installing the chassis.
- Ensure that there is adequate space around the rack to allow for servicing the chassis and for airflow.
- If the rack has wheels, ensure that the brakes are engaged or that the rack is otherwise stabilized



- For a round hole (tapped) rack, use clip nuts with M6 x 16 screw (not provided).



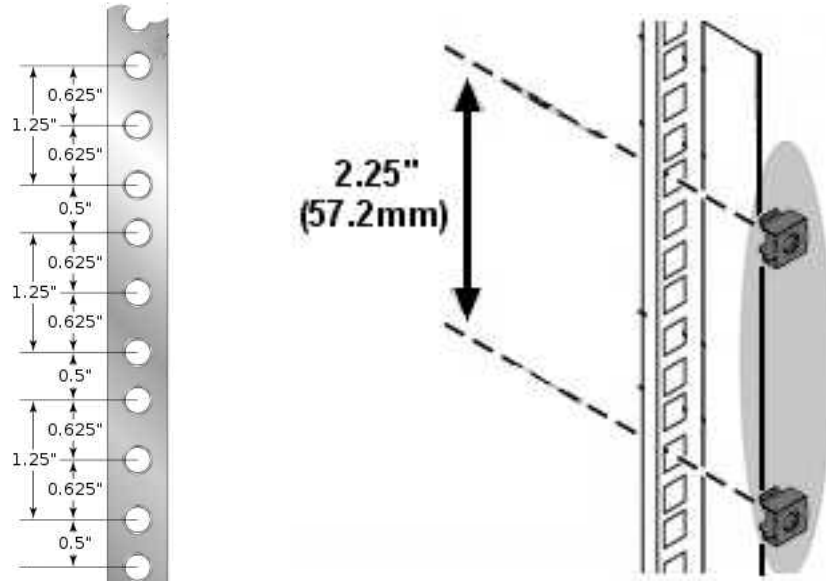
- For a square hole (untapped) rack (shown below), use M6 x 16 screws, plastic round washers head screws and M6 cage nut (provided).



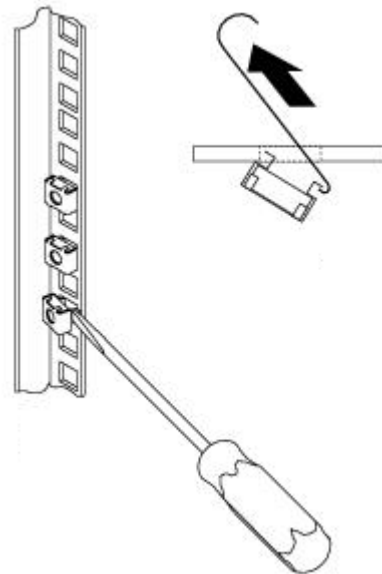
### 8.11 Installing the PMM 9010-RMA

This section describes how to install the PMM 9010-RMA Rack Mount Adapter:

- Insert the cage nuts behind the vertical rails with respect to the Rack Unit Boundary and the distance show below:



- You can use a rack-insertion tool or a flat-blade screwdriver to install the cage nuts.



- Insert the chassis into the rack.
- Slide the chassis into the rack until the front flange is flat against the cage nuts.
- Using the four screws and black plastic washers, fix the chassis by its flanges to the rack.

### 8.12 Use of the PMM 9010-RMA with PMM 3010

The following procedure is indifferently referred to the 3010 or 3030.

This section provides the information needed to install your 3010 Instrument on the PMM 9010-RMA Rack Mount Adapter.

- Remove the frontal panel from the Rack unscrewing the milled knob without loosing it completely.
- Using the handles, open the PMM 9010-RMA slowly.
- Place the instrument by the rectangular holes and drag the instrument in contact with the frontal panel.
- To ensure the necessary stability, the instrument must be fastened to the unit using the straps.
- Connect the cables on the rear panel (see “Installation” chapter for further information)
- To fix the rear cables to the Rack Mount insert plastic straps by of the round holes.
- Using the handles, close the PMM 9010-RMA slowly.



**Fig. 8-3** PMM 9010-RMA with 3010 Instrument

**This page has been left blank intentionally**



**L3HARRIS**



**NARDA**  
Safety  
Test  
Solutions  
S.r.l. Socio Unico

**Sales & Support:**  
Via Rimini, 22  
20142 - Milano (MI)  
Tel.: +39 02 581881  
Fax: +39 02 58188273

**Manufacturing Plant:**  
Via Benessea, 29/B  
17035 Cisano sul Neva (SV)  
Tel.: +39 0182 58641  
Fax: +39 0182 586400



<http://www.narda-sts.it>

**Mod. 18-1**

**Caro cliente**

grazie per aver acquistato un prodotto NARDA! Sei in possesso di uno strumento che per molti anni ti garantirà un'alta qualità di servizio. NARDA riconosce l'importanza del Cliente come ragione di esistenza; ciascun commento e suggerimento, sottoposto all'attenzione della nostra organizzazione, è tenuto in grande considerazione. La nostra qualità è alla ricerca del miglioramento continuo. Se uno dei Suoi strumenti NARDA necessita di riparazione o calibrazione, può aiutarci a servirla più efficacemente compilando questa scheda e accludendola all'apparecchio.

Tuttavia, anche questo prodotto diventerà obsoleto. In questo caso, ti ricordiamo che lo smaltimento dell'apparecchiatura deve essere fatto in conformità con i regolamenti locali. Questo prodotto è conforme alle direttive WEEE dell'Unione Europea (2002/96/EC) ed appartiene alla categoria 9 (strumenti di controllo). Lo smaltimento, in un ambiente adeguato, può avvenire anche attraverso la restituzione del prodotto alla NARDA senza sostenere alcuna spesa. Può ottenere ulteriori informazioni contattando i venditori NARDA o visitando il nostro sito Web [www.narda-sts.it](http://www.narda-sts.it).

**Dear Customer**

thank you for purchasing a NARDA product! You now own a high-quality instrument that will give you many years of reliable service. NARDA recognizes the importance of the Customer as reason of existence; in this view, any comment and suggestion you would like to submit to the attention of our service organization is kept in great consideration. Moreover, we are continuously improving our quality, but we know this is a never ending process. We would be glad if our present efforts are pleasing you. Should one of your pieces of NARDA equipment need servicing you can help us serve you more effectively filling out this card and enclosing it with the product.

Nevertheless, even this product will become obsolete. When that time comes, please remember that electronic equipment must be disposed of in accordance with local regulations. This product conforms to the WEEE Directive of the European Union (2002/96/EC) and belongs to Category 9 (Monitoring and Control Instruments). You can return the instrument to us free of charge for proper environment friendly disposal. You can obtain further information from your local NARDA Sales Partner or by visiting our website at [www.narda-sts.it](http://www.narda-sts.it).

**Servizio richiesto:**  *Service needed:*

Solo taratura       Riparazione       Riparazione & Taratura       Taratura SIT       Altro:  
 Calibration only       Repair       Repair & Calibration       Certified Calibration       Other:

**Ditta:**

*Company:*

**Indirizzo:**

*Address:*

**Persona da contattare:**

*Technical contact person:*

**Telefono:**

*Phone n.*

**Modello:**

*Equipment model:*

**Numero di serie:**

*Serial n.*

**Accessori ritornati con l'apparecchiatura:**  **Nessuno**       **Cavo(i)**       **Cavo di alimentazione**      **Altro:**  
 *Accessories returned with unit:*       *None*       *Cable(s)*       *Power cable*      *Other:*

**Sintomi o problemi osservati:**  *Observed symptoms / problems:*

**Guasto:**  **Fisso**       **Intermittente**      **Sensibile a:**  **Freddo**       **Caldo**       **Vibrazioni**       **Altro**  
 *Failure:*  *Continuous*       *Intermittent*      *Sensitive to:*  *Cold*       *Heat*       *Vibration*       *Other*

**Descrizione del guasto/condizioni di funzionamento:**

*Failure symptoms/special control settings description:*

**Se l'unità è parte di un sistema descriverne la configurazione:**

*If unit is part of system please list other interconnected equipment and system set up:*

